

**WARREN COUNTY ELDERLY SERVICES PROGRAM**

**WCESP**

*Helping Warren County older adults  
maintain their independence and dignity*

**ANNUAL REPORT  
2004**



## TABLE OF CONTENTS

<i>Message from the Warren County ESP Advisory Council Chairman</i>	2
<i>Warren County Commissioners; Warren County ESP Advisory Council</i>	3
<i>Warren County Elderly Services Program</i>	4
<i>Participant Profile</i>	5
<i>Participant Profile by Percentages - Pie Charts</i>	6, 7
<i>Utilization of Funds</i>	8
<i>Expense Breakdown - Pie Chart</i>	9
<i>Participants Served by Township</i>	10
<i>Changing Profile of the Warren County ESP Consumer</i>	10
<i>Disenrollment Outcomes; WCESP Census</i>	11
<i>Service Providers</i>	12

## A MESSAGE FROM THE CHAIRMAN OF THE WARREN COUNTY ADVISORY COUNCIL . . .

It is my pleasure to present the 2004 Warren County Elderly Services Program Annual Report. This report provides an overview of financial information, as well as a profile of the 1,635 clients we were able to serve during 2004.

Looking at the data provided in this report, you will see that the average age of an ESP client on the program in 2004 remained at 78 years of age, with 45% being 80 years of age or older. The Warren County Elderly Services Program continued to serve those most in need, with 70% of our clients having severe disabilities and almost half (47%) of all ESP consumers served were at or below 150% of poverty. We saw the average monthly income of an ESP client was \$1,422, with their average monthly out-of-pocket medical costs being \$323. Lastly, as in past years, the services that consumed the greatest percentage of the funding were Homemaker and Home Delivered Meals.

The Warren County Elderly Services Program served the community well during the last year and the Warren County Advisory Council remains grateful to all those who support this program. Our staff, as well as our network of providers, continued to demonstrate their commitment to serving our Warren County seniors. Their hard work has touched the lives of 1,635 older adults, helping them to remain independent and in their homes. We thank them for their efforts and hard work throughout the year. Of course we remain extremely grateful to the taxpayers in Warren County, as well as the County Commissioners who have remained very supportive since the passing of this levy in May 2002.

In preparing to meet the growing needs of the changing population in Warren County, it is important that we examine both demographic patterns and informed projections so that we will be better prepared to address the needs of our aging and disabled population in our county. According to the Ohio Long-Term Care Research Project conducted by the Scripps Gerontology Center, Ohio has one of the largest aging populations in the United States. The 60+ population represents 17.3% of the total population in the state of Ohio. Currently, in Warren County, almost 13% of the population is age 60+, and by 2020 it is projected to increase by 145%. Serving our clients in future years will become more challenging as we see the wave of baby boomers turning 60. No doubt this generation will have a direct impact on a growing demand for our programs and services in our Warren County community. Just as they have redefined every phase of life since their birth, the boomers will also redefine aging in our network, and Warren County will hold no exception to this trend.

As in the other county levy programs, the Warren County Elderly Services Program will continue to face demands for services as our county experiences the inevitable growth in our senior population. As we continue to grow to meet the need, I am sure we will be faced with many challenges along the way. I am confident, however, that together we will be able to meet these challenges and continue in our endeavor of providing the best quality services to the older adults in Warren County.

Bernard Eichholz, Chairman  
Warren County Advisory Council

**WARREN COUNTY  
COMMISSIONERS**

Larry L. Crisenbery  
C. Michael Kilburn  
Pat Arnold South

**Administrator**  
Bob Price

**WARREN COUNTY  
ELDERLY SERVICES PROGRAM  
ADVISORY COUNCIL**

**Chairman**  
Bernard Eichholz

**Vice Chair**  
Nick Nelson

**Secretary**  
Ann Shann

Mark Clark  
Larry L. Crisenbery  
Ann Munafo  
Bob Price  
Warren Young

## WARREN COUNTY ELDERLY SERVICES PROGRAM

In May 2002, Warren County voters and taxpayers approved a .96-mil, five-year property tax levy to support in-home community-based services for the elderly.

The philosophy of the Warren County Elderly Services Program is to foster self-determination and independence for elderly Warren County residents through the provision of services that enable them to remain in their homes. The program recognizes the importance of the family and other informal support systems in achieving this goal and relies on the continuation of this support in order to be effective. Existing sources of reimbursement (such as Medicare, Medicaid, PASSPORT and private insurance) continue to be primary and the applicant/consumer must apply for, and diligently seek to obtain, services through these sources of reimbursement first. The program includes a co-payment feature for those recipients who are able to contribute to the cost of services based on established guidelines.

The purpose of the Warren County Elderly Services Program is to provide information and assistance about aging concerns, services and the aging network; to provide screening, assessment, referral and case management services to eligible consumers age 60 and older who reside in Warren County; and to provide in-home services to enable older persons to exercise self-determination and to remain as independent as possible.

Warren County Elderly Services Program Advisory Council oversees the operation of the levy program and, working in conjunction with the Warren County Commissioners, develops policy in the area of service provision, and oversees budgets. The Advisory Council works directly with Council on Aging of Southwestern Ohio, the designated Area Agency on Aging, to administer the program. Council on Aging provides a consumer management information system, processes all billing (including consumer co-pays), provides quality monitoring and technical assistance, and provides a fiscal audit of all expenditures.

Warren County Community Services, Inc. provides intake and case management for the Warren County Elderly Services Program. Other for-profit and non-profit agencies perform a variety of in-home services needed by the older adults of Warren County.

# WARREN COUNTY ELDERLY SERVICES PROGRAM PARTICIPANT PROFILE

RACE			HOUSEHOLD INCOME		
	#	%	Poverty Level %	#	%
Caucasian	1,592	97	At or below 100%	256	16
Minority	43	3	101% - 150%	511	31
<b>Total</b>	<b>1,635</b>	<b>100</b>	151% - 200%	390	24
			201% poverty or above	478	29
			<b>Total</b>	<b>1,635</b>	<b>100</b>

GENDER			AGE GROUPINGS		
	#	%		#	%
Male	485	30	Age 60-69	303	19
Female	1,150	70	Age 70-79	595	36
<b>Total</b>	<b>1,635</b>	<b>100</b>	Age 80-89	612	37
			Age 90+	125	8
			<b>Total</b>	<b>1,635</b>	<b>100</b>

PHYSICAL IMPAIRMENTS		
	#	%
Low Disabilities	118	7
Moderate Disabilities	377	23
Severe Disabilities	1,140	70
<b>Total</b>	<b>1,635</b>	<b>100</b>

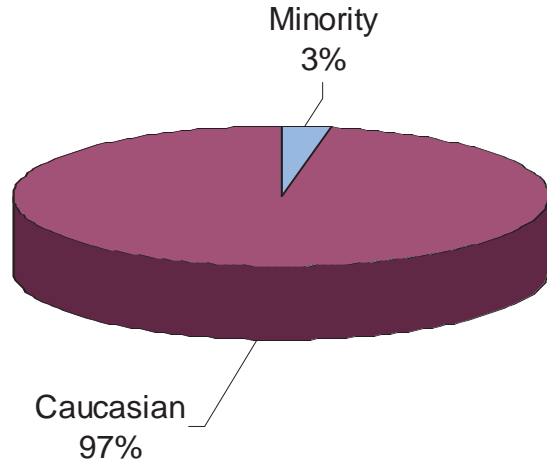
**AVERAGE AGE**  
The average age of a Warren County ESP consumer in 2004 was 78 years old

- INCOME AND EXPENSES**
- 21% of the consumers have a co-payment
  - Average monthly income = \$1,422
  - Average out-of-pocket monthly medical costs = \$323

**COST COMPARISONS**

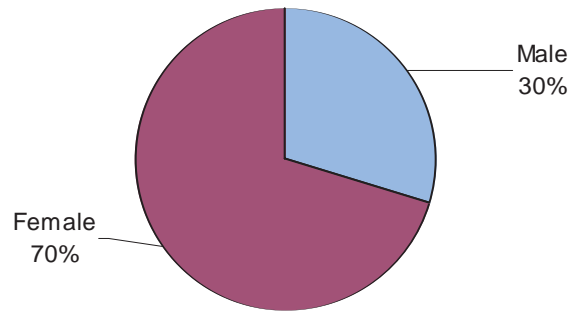
In 2004, ESP<sup>SM</sup> enabled 1,635 disabled Warren County residents to remain independent and live in their own homes at an average monthly cost of \$335, compared to \$5,209 each month to live in a Medicaid nursing home.

### RACIAL BREAKDOWN OF SENIORS RECEIVING SERVICES

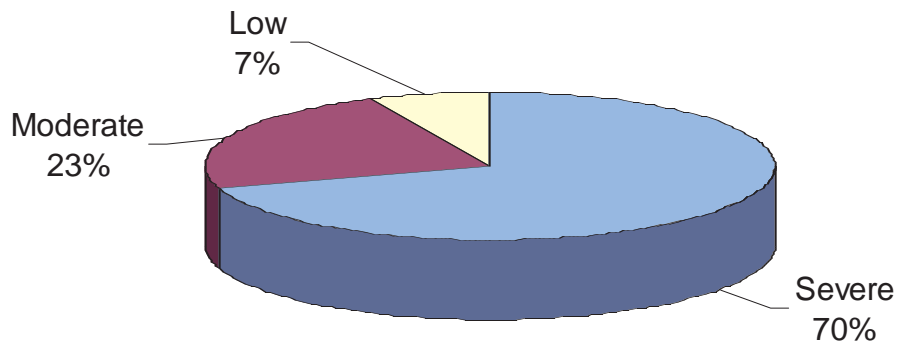


Minorities are 1.8% of the Warren County general population (Census 2000). Three percent (3%) of Warren County ESP consumers are minorities.

### GENDER BREAKDOWN OF SENIORS RECEIVING SERVICES

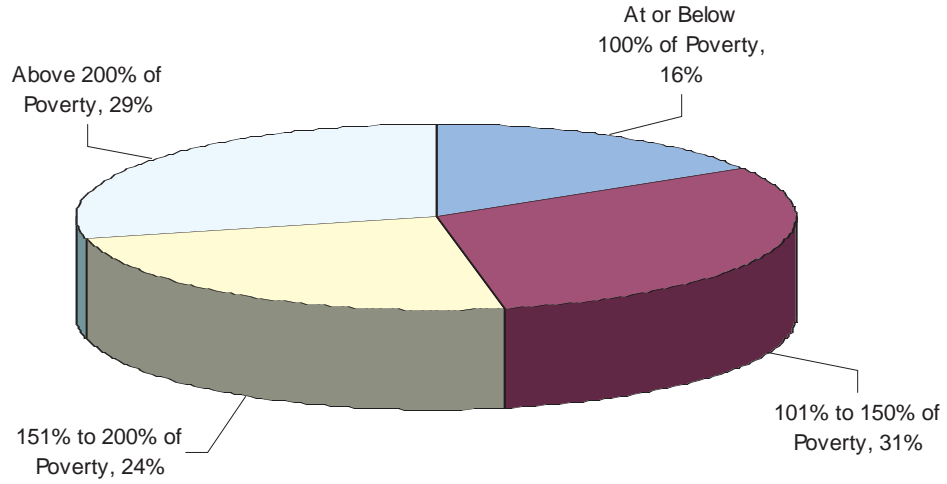


### LEVEL OF DISABILITY OF SENIORS RECEIVING SERVICES

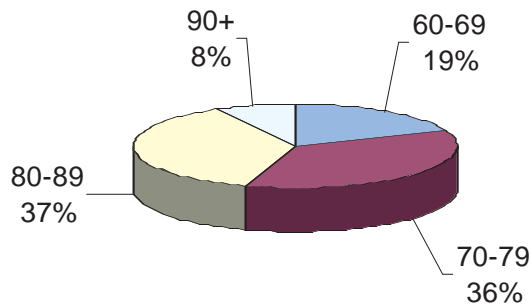




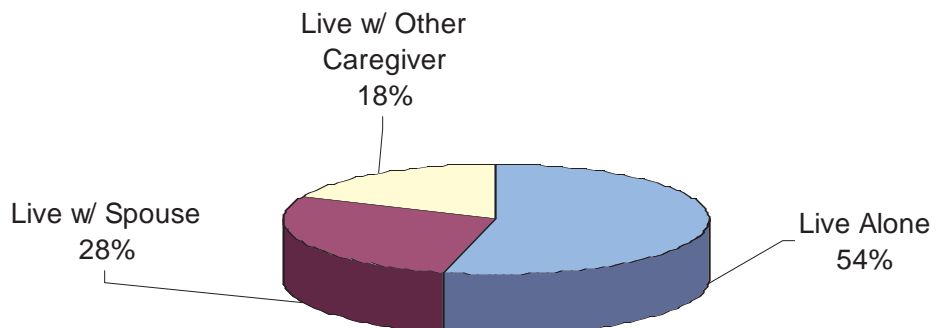
### INCOME BREAKDOWN OF SENIORS RECEIVING SERVICES



### AGE BREAKDOWN OF SENIORS RECEIVING SERVICES



### LIVING ARRANGEMENTS OF SENIORS RECEIVING SERVICES



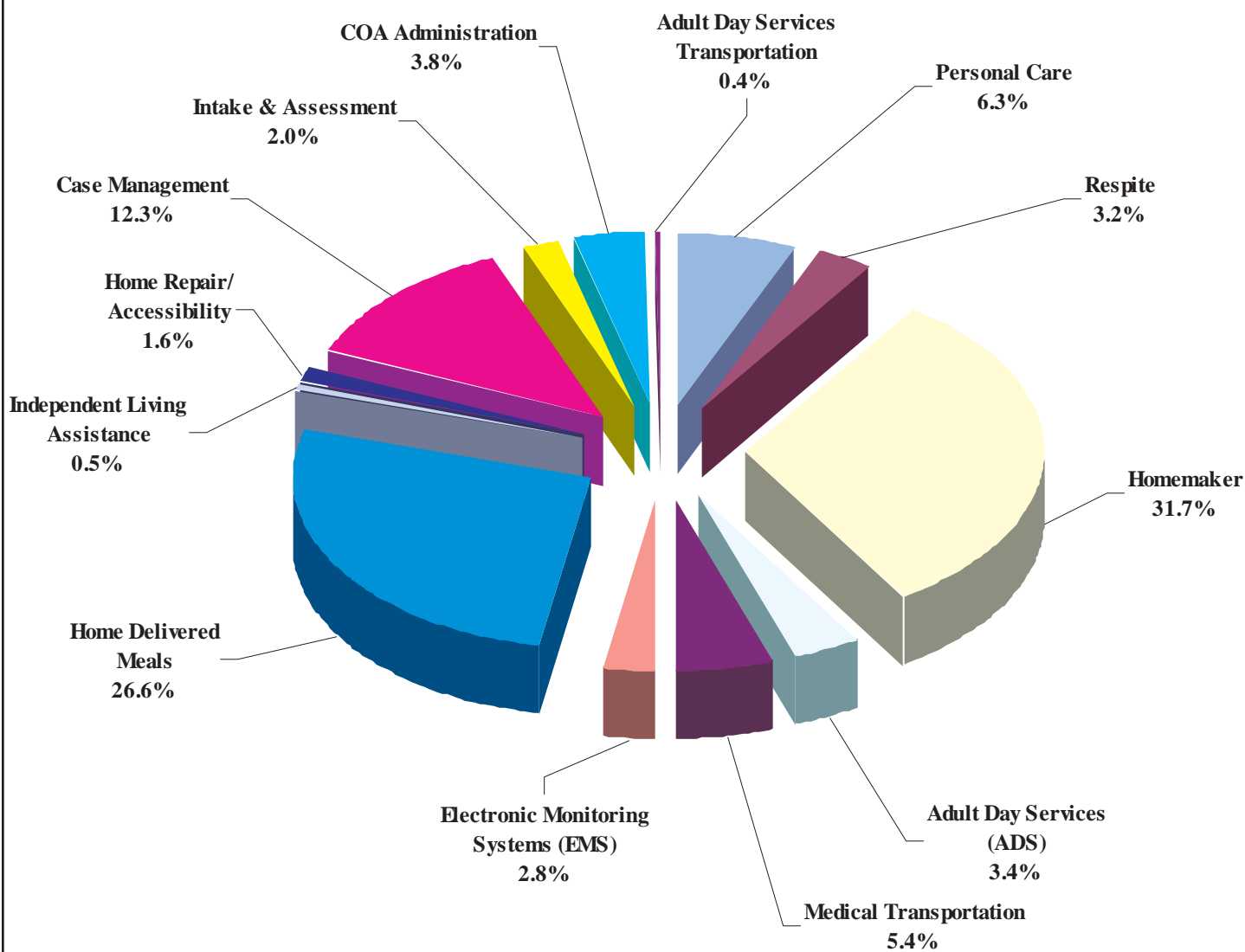
# WARREN COUNTY ELDERLY SERVICES PROGRAM

## UTILIZATION OF FUNDS

**Total Consumers Served: 1,635**

SERVICES	CONSUMERS	UNITS	EXPENSES
Personal Care	230	10,455	\$ 260,632
Homemaker	829	53,956	1,314,937
Respite	56	5,243	132,974
Adult Day Services	44	2,939	142,284
Adult Day Services Transportation	18	3,904	15,123
Medical Transportation	269	5,345	222,835
Electronic Monitoring Systems (EMS)	631	5,030	116,820
Independent Living Assistance	91	886	21,053
Home Delivered Meals	1,073	186,812	1,096,180
Home Repair/Accessibility	105	107	67,728
Case Management	1,635		511,018
Intake & Assessment			90,215
COA Administration			158,952
			<b>Total Expenses \$4,150,751</b>
Federal, State and Other			(220,667)
Consumer Donation			(57,743)
Consumer Co-Payment			(67,651)
Administration Percentage	3.8%		
		<b>Total Levy</b>	<b>\$ 3,804,690</b>

# WARREN COUNTY ELDERLY SERVICES PROGRAM EXPENSE BREAKDOWN JANUARY 1, 2004 - DECEMBER 31, 2004



# WARREN COUNTY ELDERLY SERVICES PROGRAM

## PARTICIPANTS SERVED BY TOWNSHIP

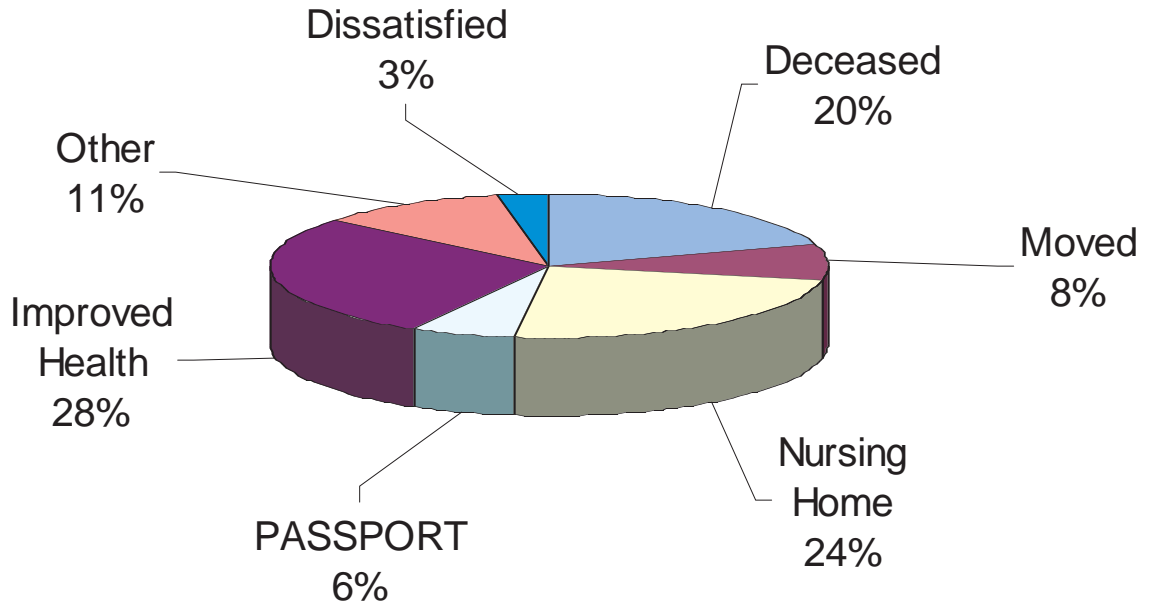
<b>TOTAL PARTICIPANTS SERVED</b>		<b>1,635</b>	
Carlisle Village	45	Middletown City (Warren County)	14
Clear Creek Township	40	Morrow Township	47
Deerfield Township	106	Other	19
Franklin Township	380	Salem Township	56
Hamilton Township	61	South Lebanon Village	35
Harlan Township	32	Springboro City (Warren County)	77
Lebanon City	243	Turtle Creek Township	102
Loveland City (Warren County)	9	Union Township	47
Maineville Village	36	Washington Township	10
Mason City	147	Wayne Township	50
Massie Township	20	Waynesville Village	59

### Changing Profile of the ESP<sup>SM</sup> Consumer: Preparing for Future Needs

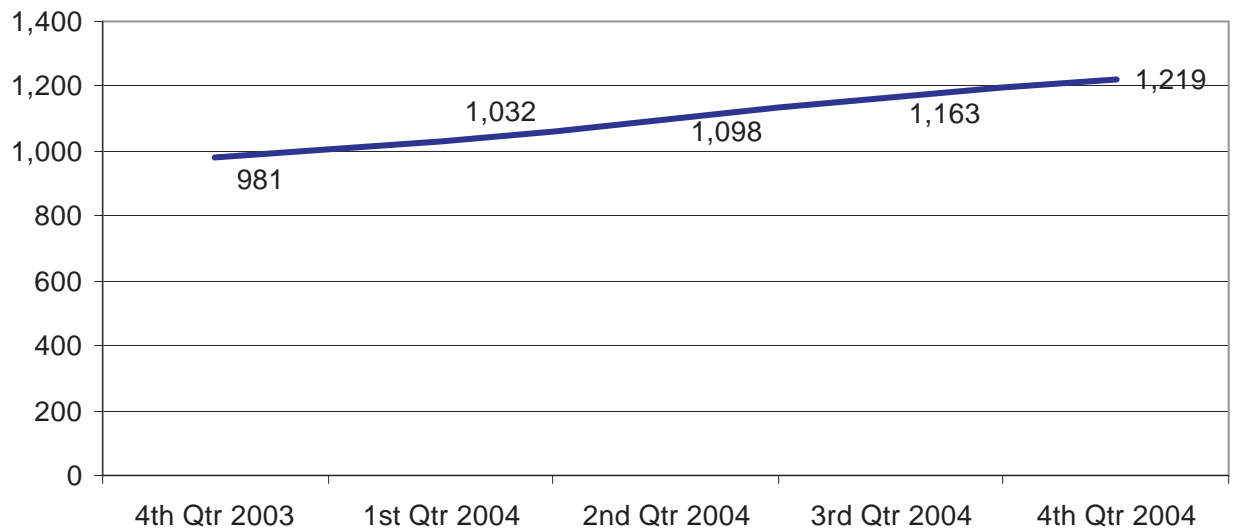
The consumer profile gives us a picture of an aging population, living longer, displaying increased disabilities, and having a greater need for services. Healthcare costs continue to escalate well above income growth. Given the changing economy, the Elderly Services Program<sup>SM</sup> will be challenged to be prepared to meet the growing needs of the changing population.

- Average out-of-pocket medical costs per ESP consumer were \$323/month, 22% of the average total income, \$1,422/month.
- Forty-five percent (45%) of ESP consumers were 80 years of age or older.
- Almost half (47%) of all ESP consumers are at or below 150% of poverty.
- Fifty-four percent (54%) of all ESP consumers live alone, an increase of 3% from the previous year.
- Fifty-three percent (53%) of all ESP consumers receive Personal Care and/or Homemaking, while 66% receive Home Delivered Meals and 39% receive Electronic Monitoring Systems.

## WARREN COUNTY ELDERLY SERVICES PROGRAM DISENROLLMENT OUTCOMES



### W C E S P C e n s u s , 2 0 0 4



# WARREN COUNTY ELDERLY SERVICES PROGRAM

## SERVICE PROVIDERS

Acare Home Health	Handy Household Helpers	Otterbein Lebanon Adult Day Service
Adult Care Enterprises	High Quality Staffing LLC	Personal Touch Home Care of Ohio, Inc.
Alan W. Arend	Home Care Network	Response Ability Systems Inc.
Almost Family	Home First Non-Medical	Responselink of Cincinnati
Alternative Home Care & Staffing, Inc.	Home Helpers	Rural Metro of NE Ohio
American Nursing Care - Cincinnati	Homeowner Solutions, LLC	S. P. Contracting, LLC
American Nursing Care - Dayton	Interim Health Care of Cincinnati, Inc.	Safeway Safety Step, Inc.
American Ramp Systems	Intrepid USA Healthcare Services	Select Health Systems
Bathblest Renovations	Jewish Community Center of Cincinnati	Senior Independence
Black Stone healthcare	Jewish Family Service of the	Senior Independence Adult Day Services
CareView Home Health	Cincinnati Area	Senior Resource Connection
Caring Hearts Home Health Care, Inc.	Judson Care Center, Inc.	Spotless Maintenance Systems
Clinton County Adult Day Center, Inc.	Lifeline Systems, Inc.	The Visiting Nurse Association of
Comfort Keepers #123	LifeSpan Home Care	Greater Cinti. and No. Ky.
Comfort Keepers #172	LifeSphere	Thermal-Shield Inc.
Comprehensive Health Care Services	McKnight Terrace Lifeline	Tri-State Maintenance
Deaconess Lifeline	Meda-Care Transportation, Inc.	TriHealth Lifeline
Edenvue	Medic One	U.T.S. (Universal Transportation Systems)
Emerson Heating & Cooling Company	Mercy Lifeline	V & N Services, Inc.
Empowering Services II, Inc.	Mercy Lifeline Cincinnati	VRI
Envision Home Care Alternatives, Inc.	Middletown Area Senior Citizens, Inc.	Warren County Community Services, Inc.
First Medical	Nerswick Home Services, LLC	
Guardian Medical Monitoring, Inc.	Nurses Care, Inc.	