

BUTLER COUNTY ELDERLY SERVICES PROGRAM



ANNUAL REPORT 2005

A TIME OF RENEWAL

TABLE OF CONTENTS

Message from the BCCES Board President	2
Butler County Elderly Services Levy Passage: a Major Achievement	3
Butler County ESP; Butler County Citizens for Elderly Services/Commissioners	4
Success Story	5
Consumer Profile	6, 7
How Funds are Used	8
Expenditures by Percentages	9
Where Consumers Live	10
Reasons for Leaving Butler County ESP and Number Served	11
Service Providers	12



LEVY PUTS AN END TO THE WAITING LIST: A MESSAGE FROM THE BOARD PRESIDENT

On behalf of the Butler County Citizens for Elderly Services, Inc., it is my pleasure to present the Annual Report for 2005.

This time last year, we had nearly 900 older adults on a waiting list for services to help them remain in their homes. Now, as I write this in April 2006, I thank with gratitude all the people who decided this situation had to change.

They include the Butler County Commissioners, who agreed to let us and the Council on Aging of Southwestern Ohio place a tax levy on the ballot a year early. They include the dedicated staff and leaders of our four intake and case management provider agencies: Senior Citizens, Inc. (Hamilton); LifeSpan; Middletown Area Senior Citizens; and Oxford Senior Citizens. And they include the many volunteers and community groups who supported the levy campaign.

Because of their hard work and belief in our mission and because of our generous voters, I am able to say with pride that the waiting list is no more. After the levy passed in November, workers wasted no time in enrolling people in the Elderly Services ProgramSM.

Hundreds of older adults are now receiving the home-delivered meals, housekeeping help, and other services that enable them to stay in the familiar surroundings of home and be a part of their communities. They have choices and dignity. As a community, we have shown this is what we want for the elders among us and for their caregivers.

Not only is this the right thing to do, it is the cost-effective choice for our society. Providing long-term care for elderly and disabled people in their own homes is about one-tenth the cost of nursing home care.

Despite the waiting list, Butler County's Elderly Services Program served nearly 3,000 people in 2005. The typical client is a woman in her late 70s of very modest means. Because of age and health problems, she cannot get to the store on her own or clean her house or perform many other daily functions. But she's not ready to go to a nursing home, and with a little help, she doesn't have to.

I am honored to be a part of this important work. We pledge to continue to provide high-quality care, to be good stewards of the public's money, to strive for improvement, and to advocate for the older adults of Butler County.

Fred DeBiasi, President
Butler County Citizens for Elderly Services, Inc.

BUTLER COUNTY ELDERLY SERVICE LEVY PASSAGE A MAJOR ACHIEVEMENT

Help Our Elderly

☒ **Vote Yes for
Elderly Services**

The most important achievement of the Butler County Elderly Services Program was the effort that led to the passage of the Butler County Elderly Services Levy, on November 8, 2005.

Because of the passage of the levy, Butler County Elderly Services Program is now able to

eliminate the waiting list and provide in-home services to the older adults who have been waiting for assistance.

Thanks to the voters and those who worked so hard for passage of the levy. The availability of the Elderly Services Program provides an option to older adults who need some assistance but want to remain in their home.



Joe Nuxhall, Honorary Chair of Campaign Committee for Butler County Elderly Services Levy, and Ed DeVillez, Chair of Campaign Committee for Butler County Elderly Services Levy

COALA® Caregiver Education and Support Program provides assistance to those waiting for service

In December 2005, a home care nurse from the COALA® Caregiver Education and Support Program made a home visit to a caregiver whose father-in-law was on the Butler County ESP waiting list.

The COALA® assessment found the caregiver providing services for her father-in-law, mother-in-law and an elderly neighbor she'd known for over ten years. The caregiver's mother-in-law wasn't on the Butler County waiting list or receiving any outside services because she refused to allow anyone in her home other than family members. This refusal was due in part to her advancing Alzheimer's disease.

The elderly neighbor was receiving services through the Elderly Services Program, but relied on this caregiver for additional help. Needless to say, the caregiver was feeling stressed and overwhelmed. The COALA® nurse visited the caregiver in the home and provided suggestions that helped her deal with the stress and feelings of being overwhelmed and thus prevented burnout.

During the three hour COALA® home visit, the caregiver received a copy of the COALA® Caregiver/Client Training Manual, Council on Aging Resource Directory and information on community resources.

A follow up phone call to the caregiver found that, due to the COALA® intervention, the caregiver felt less stress and could better deal with the wait for services for her father-in-law.

BUTLER COUNTY

ELDERLY SERVICES PROGRAM

The Butler County Elderly Services Program (BCESP) helps older adults remain independent within the familiar surroundings of their own homes for as long as possible.

Nursing homes are often necessary, but most people do not want to go there before their time. With the help of services such as home-delivered meals and housekeeping, many older adults can delay or prevent nursing home placements.

Of all the options for long-term care, services in the home are also the least expensive. It costs about \$359 a month per consumer in Butler County's Elderly Services Program, compared with \$4,800 a month for nursing home care.

Butler County's Elderly Services Program is supported by a local tax levy, funds from Title III of the Older Americans Act, and co-payments from consumers who are able to contribute to the cost of their care. Donations are also accepted for the home-delivered meals program.

The program operates as a partnership of Butler County Citizens for Elderly Services, Inc. (BCCES) and Council on Aging of Southwestern Ohio (COASM). BCCES is a

community board that develops policies and oversees the budget. COA processes all billing and provides program planning, reporting, auditing, and other technical assistance.

Four well-established Butler County non-profit agencies provide intake and case management. They are: LifeSpan, Inc.; Senior Citizens, Inc.; Middletown Area Senior Citizens, Inc.; and Oxford Senior Citizens, Inc.

Other agencies also provide a variety of services, such as home repair and electronic monitoring devices, that help the older residents of Butler County remain as independent as possible for as long as possible.

**Cost is \$359 a month
per consumer in
Butler County's Elderly
Services Program**

**Cost is \$4,800 a month for
nursing home care**

Butler County Citizens for Elderly Services, Inc.

President, Fred DeBiasi

Vice President, Melvin Baker

Marilee Broscheid

Kathleen Dudley

Charlene Himes

Jerome Kearns

Dr. Jennifer Kinney

Peggy Kollstedt

Treasurer, Al Zenz

Secretary, Helen Smith

Karen Lowery

Alisa Miller

Janet Miller

Lena Saylor

Dr. James Scott

Butler County Commissioners

Michael A. Fox

Charles Furmon

Gregory V. Jolivet

Administrator, Derek Conklin

BUTLER COUNTY ELDERLY SERVICES: HELPING OLDER ADULTS REMAIN IN THEIR HOMES

In his prime, Lewis Hotelling could dance well enough to win a jitterbug contest even though he lost part of one leg in the Korean War. His wife, Ruth, in her day, was a hostess at a supper club in Hamilton.

Today, serious health problems have slowed them down, but, after 56 years of marriage, they still have each other and the home where they have lived for more than 30 years.

For the past five years, Butler County's Elderly Services ProgramSM has made it possible for the Hotellings to get the extra help they need to remain in their home, despite Lewis' three bouts with cancer and Ruth's hip surgeries and diminishing mobility. They are receiving home-delivered meals, medical transportation, personal and companion care and homemaker services. They also have the Electronic Monitoring System that links them to assistance in an emergency. They receive help three hours a day, three days a week. ESPSM also built an access ramp to their home so Lewis can go in and out on his motorized scooter.



"For people like us – we wouldn't be able to maintain ourselves in this home," said Lewis, 76. "We would be in a nursing home. It's a godsend."

Born and raised in Hamilton, Lewis joined the Air Force in 1947 and fought in the Korean War. He went on to a 20-year career in the military and traveled around to teach Professional Military Science and Tactics, while helping Ruth raise their two daughters.

In 1967, the Hotellings returned to Hamilton. Lewis took a job with the Ohio Bureau of Worker's Compensation and Ruth worked at a Holiday Inn.

As their health problems mounted, the Hotellings tried to find private caretakers. "It was just not reliable and was a real drain on our finances," Lewis said. During one of Lewis' hospital stays, they heard about Meals on Wheels and the Elderly Services Program.

"Things are pretty much under control and we're doing OK," Lewis said.

But he and Ruth are struggling with their latest challenge. One of their daughters, who has been ill for some time, has been diagnosed with terminal cancer. "Our job now is to do the best we can for her," Lewis said. "Give her all the support we can and keep a stiff upper lip."

Their other daughter has recently moved to the area to be closer to her family. With her help and the ESPSM, they believe they can keep going.

"We want to stay here as long as we can," Lewis said. "We don't need a lot of help. When it takes ten hours a week to make a real difference in someone's life, that's tremendous."

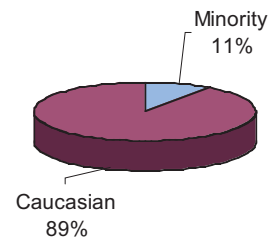
BUTLER COUNTY ESP CONSUMER PROFILE

Racial Profile

Caucasian	2,423
African-American	283
Other	8
Total	2,714

Minorities are 5.2% of the Butler County general population (Census 2000). Ten percent (11%) of Butler County Elderly Service Program consumers are minorities.

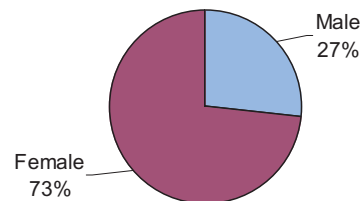
RACE OF SENIORS RECEIVING SERVICES



Gender

Male	720
Female	1,994
Total	2,714

GENDER OF SENIORS RECEIVING SERVICES

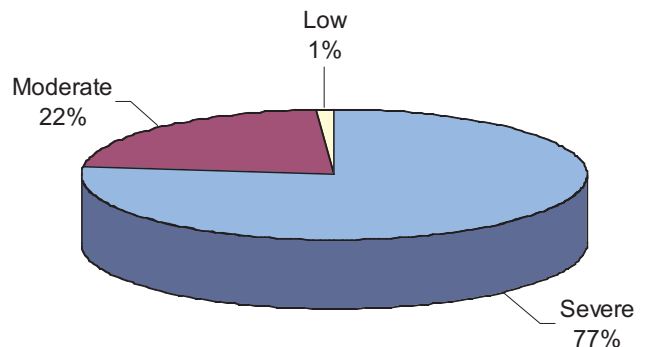


Level of Disability

Low Disabilities	40
Moderate Disabilities	605
Severe Disabilities*	2,069
Total	2,714

* Severe disability means impairment of two or more activities of daily living, such as bathing and eating.

LEVEL OF DISABILITY OF SENIORS RECEIVING SERVICES



BUTLER COUNTY ESP CONSUMER PROFILE

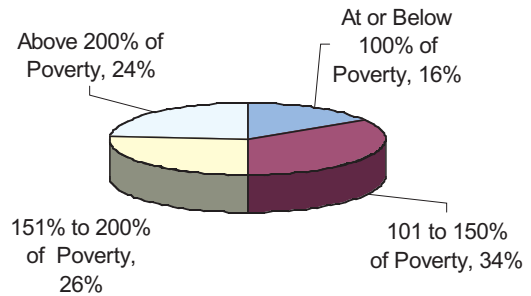
Income and Expenses

Income:

76% at or below 200% of FPL*
24% above 200% of FPL

- ♦ Average monthly income of consumers = \$1,341
- ♦ Average monthly out-of-pocket medical costs per consumer = \$257
- ♦ Twenty-one percent (21%) of the consumers have a co-payment

INCOME OF SENIORS RECEIVING SERVICES

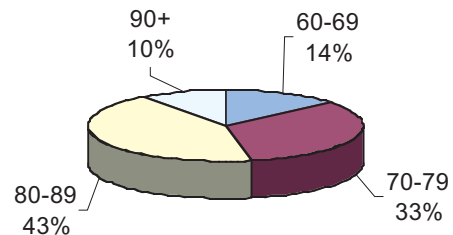


Age

Age 60 - 69	383
Age 70 - 79	893
Age 80 - 89	1,157
Age 90+	281

The average age of the Butler County ESP consumer in 2005 was 79 years old.

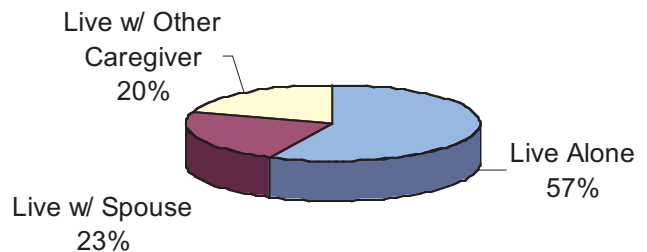
AGE OF SENIORS RECEIVING SERVICES



Living Arrangements

Live with Spouse	624
Live with Other Caregiver	543
Live Alone	1,547

LIVING ARRANGEMENTS OF SENIORS RECEIVING SERVICES



*FPL - Federal Poverty Level for 2005: an annual income of \$9,570 for one person

BUTLER COUNTY ELDERLY SERVICES PROGRAM

HOW FUNDS ARE USED

Total Clients Served: 2,714

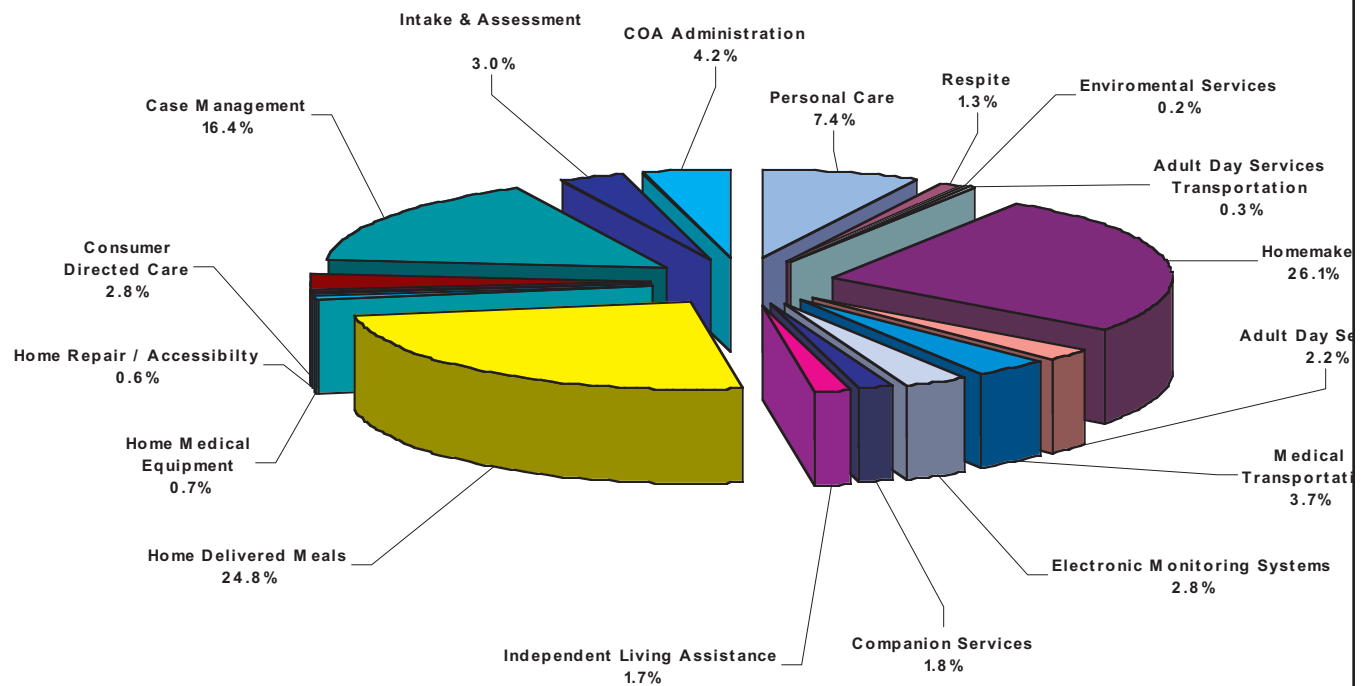
	Consumers	Service Units	Expenses
Personal Care	372	24,746	\$ 602,850
Homemaker	1,198	91,324	2,133,701
Respite	56	4,439	106,034
Adult Day Services	54	4,382	179,689
Adult Day Services Transportation	19	10,110	22,617
Medical Transportation	491	13,808	305,092
Electronic Monitoring Systems	1,221	11,021	230,664
Companion Services	160	7,215	144,796
Independent Living Assistance	278	5,172	136,396
Home Delivered Meals	1,672	337,409	2,024,700
Home Medical Equipment	350	803	55,346
Environmental Services	45	201	16,632
Home Repair/Accessibility	143	157	48,180
Consumer Directed Care	56	N/A	227,956
Case Management	2,714		1,338,027
Intake & Assessment			247,047
COA SM Administration			346,406
Federal, State and Other			(472,688)
Consumer Donation			(76,859)
Consumer Co-Payment			(114,792)

Total Levy \$ 7,501,794

BUTLER COUNTY ELDERLY SERVICES PROGRAM

EXPENSES BY PERCENTAGES

JANUARY 1 - DECEMBER 31, 2005



BUTLER COUNTY ELDERLY SERVICES PROGRAM

WHERE CONSUMERS LIVE

Fairfield City	214	Morgan Township	22
Fairfield Township	74	Oxford City	78
Hamilton City	903	Oxford Township	9
Hanover Township	38	Reily Township	4
Lemon Township	13	Ross Township	40
Liberty Township	60	St. Clair Township	37
Madison Township	45	Trenton City	80
Middletown City	818	Wayne Township	10
Milford Township	15	West Chester Township	183
Monroe City	51	Other	20

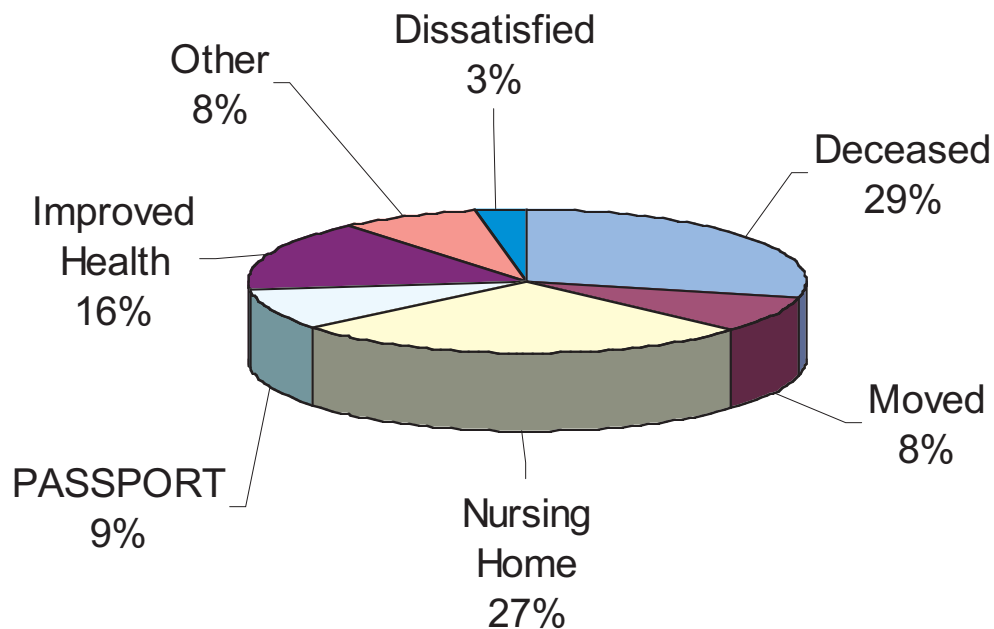
TOTAL CONSUMERS SERVED 2,714

Changing Profile of the ESPSM Consumer

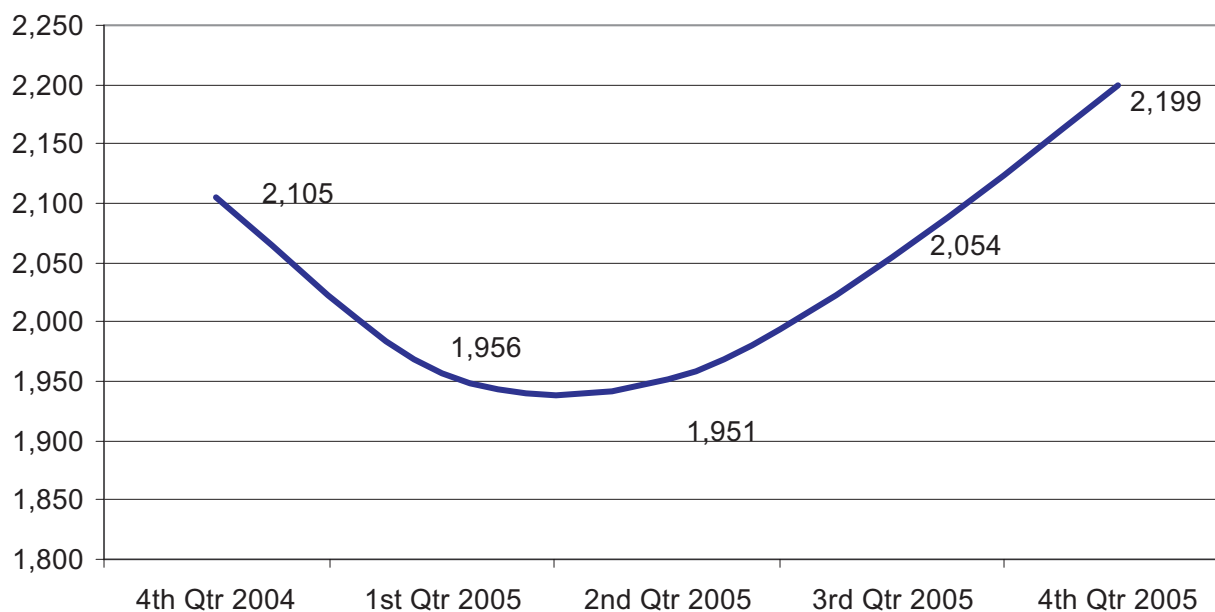
The consumer profile gives us a picture of an aging population, living longer, displaying increased disabilities and having a greater need for services. As health care costs continue to escalate, the Elderly Services ProgramSM must be prepared to meet the growing needs of our older adult population.

- ☐ Average out-of-pocket medical costs per ESP consumer for 2005 were \$257/month; the average monthly income was \$1,341.
- ☐ Over half (53%) of ESP consumers were 80 years of age or older, an increase of 2% over the previous year.
- ☐ Seventy-seven percent (77%) of ESP consumers had a severe disability, a 3% increase over last year
- ☐ Fifty-eight percent (58%) of ESP consumers received personal care and/or homemaking services, 62% received home delivered meals and 45% received electronic monitoring systems.
- ☐ Fifty-seven percent (57%) of ESP consumers live alone.

BUTLER COUNTY ELDERLY SERVICES PROGRAM REASONS WHY CONSUMERS LEAVE



BCESP Consumers Served, 2005



BUTLER COUNTY ELDERLY SERVICES PROGRAM

SERVICE PROVIDERS

Acare Home Health	Fidelity Health Care (CareView Home Health)	Mullaney's Pharmacy and Home Health Care
Active Day of Cincinnati	First Medical	Nerswick Home Services, LLC
Adult Day Services @ Butler County Care Facility	Formula Exterminators, Inc.	Northwest Elder Care LLC
Advanced Medical	Frosty's Chauffeur Service	Nurses Care, Inc.
Alan W. Arend	Guardian Medical Monitoring, Inc.	Otterbein-Lebanon Adult Day Service
Algo Termite & Pest Control	Handy Household Helpers	Oxford Senior Citizens, Inc.
All Gone Termite & Pest Control, Inc.	Helping Hands Healthcare, Inc.	Personal Touch Home Care
Almost Family	High Quality Staffing	Response Ability Systems, Inc.
Alternative Home Care & Staffing, Inc.	Home Care Network, Inc.	Responselink of Cincinnati
Amenity Home Health Care, LLC	Home First Non-Medical	Rural Metro Helpline
American Nursing Care, Inc. Cincinnati	Home Healthcare Services	Safeway Safety Step
American Nursing Care, Inc. Dayton	Home Helpers	Senior Citizens, Inc.
American Ramp Systems	Home Instead Senior Care	Senior Independence
Bathblest Renovations	Homeowner Solutions	Senior Independence Adult Day Services
Bernens Medical Pharmacy	House Mates	Senior Resource Connection
Black Stone healthcare	Interim Health Care of Cincinnati, Inc.	S P Contracting
Caring Hearts Home Health Care, Inc.	International Quality Healthcare Corp.	Spotless Maintenance Systems, Inc.
Catholic Social Services of Southwestern Ohio	Jewish Family Service of the Cincinnati Area	St. Joseph Construction Company
Charter Home Services	LifeSpan	Superior Home Care, Inc.
Colonial Community Services	LifeSphere	The Visiting Nurse Association
Comfort Keepers #123	LifeSphere Home Health Services	Thermal-Shield, Inc.
Comfort Keepers #178	McKnight Terrace	TriHealth Lifeline
Comfort Keepers #200	Meda-Care Transportation	Tri-State Maintenance
Comfort Keepers #224	Medic One, Inc.	Universal Transportation Systems (U.T.S.)
Comprehensive Home Health Care Services, Inc.	Medicall	V & N Services, Inc.
Deaconess Lifeline	Mercy Lifeline	VRI
Edenvue	Mercy Lifeline, Cincinnati	Warren County Community Services, Inc.
Emerson Heating & Cooling Company	Middletown Area Senior Citizens, Inc.	Wesley Community Services
Envision Home Care Alternatives	Millenium Nursing Agency	
	Milt's Termite & Pest Control	