

Welcome

During 2020, the COVID-19 pandemic brought into sharp focus for me the important role the Elderly Services Program (ESP) plays in our community. ESP and its partner organizations quickly became a lifeline for older adults, providing food, masks, supplies and other support. For example, Clinton County older adults received 685 emergency food boxes (each containing a 14-day supply of food) during the pandemic.



Others stepped up as well. Kudos to Clinton County resident Donna Slone-Gumbert, who received a Clinton County Community Champions (C4) Award for her grassroots work to help meet the needs of older adults during the pandemic. Donna was nominated for the award by ESP administrator, Council on Aging (COA). COA also received a C4 award for its Comfort Meal Program, which provided 1,744 restaurant meals to county older adults in 2020. The meals, some of which were prepared by Wilmington’s own Beaugard’s Southern Bar B Que, helped alleviate feelings of isolation caused by the pandemic.

After sustained program growth during the previous three years – sometimes in the double-digits – ESP grew again in 2020, by 11 percent. It’s heartening to know we are helping so many of our older neighbors stay independent and safe in their homes, where they want to be.

With this success comes natural growing pains, and we’ve reached the tipping point, where the senior services levy that pays for the majority of the program will not allow it to continue to grow. We are now in danger of having to ask those who desperately need help to sit on a waiting list. That is why we have decided to ask voters – a year earlier than originally planned – to vote this November to continue to support the levy. Clinton County residents have always overwhelmingly supported the levy. They recognize that programs such as ESP make our county a great place to live – no matter your age or abilities.

We have a lot to share with you – more than will fit within this paper report. I hope you will also scan the QR code or visit the website to read more about our successes during such a challenging year.

Sincerely,
Nicole Rodman
Chair, Clinton County Elderly Services Program Advisory Council

ESP Is a Community Partnership



Clinton County Commissioners
Brenda K. Woods, Kerry R. Steed, Mike McCarty



Clinton County Elderly Services Program Advisory Council
Nicole Rodman, Chair; Deacon Bob Baker; Charles Breckel; Ray Camp; Sue Caplinger; Timothy Hawk; Trevor Shoemaker; Duane Weyand



Council on Aging
2333 Rombach Ave., Wilmington, OH 45177
(937) 449-0642, www.help4seniors.org

What Is ESP?

The Elderly Services Program (ESP) helps eligible county residents age 65 and older to remain safe and independent in their homes by providing help with certain activities of daily living (bathing, cleaning, cooking, transportation and more), filling gaps in care that may already be provided by family caregivers.

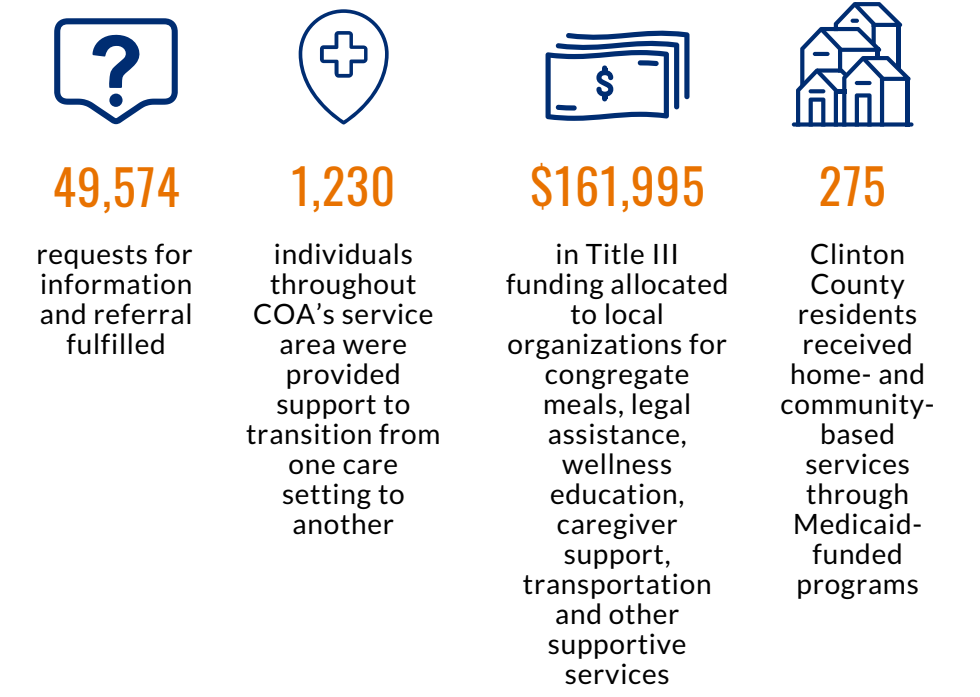
ESP offers flexible care to meet clients’ changing needs. Eligibility and care needs are determined by an in-home assessment. A professional care manager coordinates and monitors clients’ care. While income is not an eligibility factor, some clients have a co-payment based on income and assets.

ESP is a community partnership. It’s managed by Council on Aging via a contract with Clinton County Commissioners, who appoint a board to advise on program needs and policies. Provider agencies deliver ESP services via competitive contracts with COA. Clients, caregivers and taxpayers round out the partnership. ESP is a compassionate and cost-effective alternative to nursing home care.



What Is COA’s Role?

As the program’s operator, COA provides: eligibility assessments; care management; program development; provider management; data analytics; financial services; information technology; quality improvement and community engagement. As a state-designated Area Agency on Aging, COA provided these additional services to county residents in 2020:



CLINTON COUNTY Elderly Services Program

ANNUAL REPORT

2020



Client Stats 2020

Clinton County ESP clients are caught in the middle: with income too high to qualify for Medicaid, but too low to pay for private in-home care. they need help with basic activities like personal care and transportation. Between raising a family and going to work, family members help as much as they can, but ESP fills in gaps in care so our older neighbors and loved ones can continue to live independently in their homes and communities. ESP is a program that benefits our entire community.

736

CLIENTS
SERVED



67%
FEMALE



33%
MALE



58%
LIVE ALONE

86%
AGE 70+



824 DAYS
AVG TIME ON
PROGRAM



\$365/mo
OUT-OF-POCKET
MEDICAL EXPENSES

\$1,974

MEAN MONTHLY
INCOME

Success Stories

FastTrack Home supports older adults and caregivers during pandemic

During the COVID-19 pandemic, when nursing facilities were hot spots for outbreaks and even deaths, an innovative Council on Aging (COA) program helped area hospitals divert more than 1,800 older adults away from care facilities, to instead receive support at home. The program, FastTrack Home, has been available in Clinton and Hamilton counties since 2017 and expanded to Warren County in 2020.



FastTrack Home provides temporary in-home care services (transportation, meals, personal care and homemaking services) before an older adult goes home from the hospital.

In Clinton County, COA programs and services, including FastTrack Home, helped to divert more than 160 older adults from area nursing facilities during the pandemic (through May 2021). In 2020, 66 Clinton County older adults received temporary supportive care in their homes via FastTrack Home.

Beaugard's provides comfort meals for Clinton County seniors during pandemic

During the pandemic, Council on Aging (COA) has partnered with many area restaurants, including minority- and family-owned businesses, to provide special meals to area low-income older adults.

Beaugard's Southern Bar B Que, in Wilmington, is a partner in COA's award-winning Comfort Meal Program.



When Ohio Governor DeWine issued stay-at-home orders in March 2020, COA began hearing from older adults who were afraid to go out for groceries and other necessities. Others found themselves without their regular support network. Many who contacted COA had never before needed help.

"We learned from past emergency situations that food quickly becomes an urgent need for older adults," said Council on Aging CEO, Suzanne Burke. "We didn't want supply chain or staffing issues to interfere with our ability to provide meals to older adults, and we knew they might be asked to shelter-in-place for quite a while."

Pandemic upends life for Wilmington daughter, caregiver

The COVID-19 pandemic has impacted many lives, including the lives of Suzie and Priscilla. Suzie, 53, is the primary caregiver for her 69-year-old mother, Priscilla. Priscilla's recent stroke meant she needed continuous care and help moving around – sometimes using a wheelchair.



Beginning in 2019, when she enrolled in the Clinton County Elderly Services Program (ESP), Priscilla went to adult day care while her daughter was working at her job in customer service. When the pandemic began in March 2020, adult day centers closed and Priscilla had nowhere to go. That meant Suzie couldn't work. She became her mother's full-time caretaker, in the home they shared in Wilmington.

From March to July, Suzie and Priscilla existed with no income. But, five months after their struggles began, Suzie was scheduled to return to work. With adult day services still closed, she desperately needed somewhere for her mom to stay during the day.

To read these full success stories and more, scan the code with your mobile device or visit www.help4seniors.org/CCESP2020



Expenses and Revenue

How tax dollars are spent

ESP would not exist without the generous support of voters. A county tax levy in place since 1998 provides 82 percent of ESP's funding. The most recent tax levy was approved by 76 percent of voters in 2016. The 1.5-mill levy costs property owners \$37.67 per \$100,000 of property valuation annually. COA's goal is to ensure the highest quality services at the lowest cost in order to serve as many people as possible with the tax dollars available.

As the Area Agency on Aging for southwestern Ohio, including Clinton County, COA leverages state and federal funding to cover 10 percent of ESP expenses. Additional funding comes from voluntary client donations and client co-payments (31 percent of clients make a co-payment based on their income*).

Revenue

Federal and State (via Council on Aging)	\$205,515
United Way of Greater Cincinnati**	\$120,000
Client Donations and Co-payments	\$38,391
Clinton County Elderly Services Levy	\$1,612,757
TOTAL REVENUE	\$1,976,663

Expenses

SERVICE***	CLIENTS SERVED	SERVICE UNITS	COST
Care Management	625	4,992 months	\$281,682
Electronic Monitoring System	407	3,812 months	\$93,495
Homemaking	365	19,433 hours	\$599,275
Home-Delivered Meals	331	58,029 meals	\$485,054
Personal Care	85	4,319 hours	\$124,229
FastTrack Home Care Management	66	80 months	\$64,042
Home Medical Equipment	33	52 items	\$12,775
Minor Home Repairs	25	33 repairs	\$27,630
Consumer-Directed Care	21	6,943 hours	\$105,281
Respite	15	592 hours	\$15,801
Adult Day Services	12	374 days	\$29,790
Environmental Services****	5	5 jobs	\$14,850
Medical Transportation	3	41 one-way trips	\$2,133
Intake and Assessment	N/A	N/A	\$2,802
Administration	N/A	N/A	\$117,824
TOTAL EXPENSES			\$1,976,663

Additional Expenses

Clinton County Commissioners distributed \$12,700 from the senior services levy to the Blanchester Senior Center for a new HVAC unit.

*When calculating the percent of clients who have a copayment, individuals who receive only home-delivered meals are excluded because Federal requirements prohibit charging a copayment for this service. The percent of clients with a copayment is higher in 2020 because more individuals received home-delivered meals as their only service due to the pandemic.

**To help meet pandemic-related needs in Clinton County, COA requested and received funding from United Way of Greater Cincinnati.

***Services listed in order of clients served.

****Pest control, major housekeeping and waste removal.