

# Clinton County Elderly Services Program

## **CCESP**

*Helping Clinton County older adults maintain  
their independence and dignity*

## **ANNUAL REPORT 2004**



# TABLE OF CONTENTS

Message from the CCCES Board President	2
Clinton County Commissioners; CCCES, Inc.	3
Clinton County Elderly Services Program	4
Participant Profile	5
Participant Profile by Percentages - Pie Charts	6, 7
Utilization of Funds	8
Expense Breakdown - Pie Chart	9
Participants Served by Township	10
Disenrollment Outcomes; CCESP Census	11
Service Providers	12

## A MESSAGE FROM THE CCCES BOARD PRESIDENT . . .

It is my pleasure to present the 2004 Clinton County Elderly Services Program Annual Report. This report provides an overview of financial information, as well as a profile of the 587 clients we were able to serve during 2004.

This was the second year of the 5-year replacement levy passed in May of 2003. Looking at the data provided in this report, you will see that the average age of an ESP client on the program in 2004 was 78 years of age, with 49% being 80 years of age or older. The Clinton County Elderly Services Program continued to serve those most in need, with 85% of our clients having severe disabilities; 83% of all ESP consumers we served were at or below 200% of poverty. We saw the average monthly income of an ESP client was \$1,214, with their average monthly out-of-pocket medical costs being \$295. Lastly, as in past years, the services that consumed the greatest percentage of the funding were Homemaker and Home Delivered Meals.

The Clinton County Elderly Services Program served the community well during the last year and the Clinton County Board remains grateful to all those who support this program. Our staff, as well as our network of providers, continued to demonstrate their commitment to serving our Clinton County seniors. Their hard work has touched the lives of 587 older adults, helping them to remain independent and in their homes. We thank them for their efforts and hard work throughout the year.

According to the Ohio Long-Term Care Research Projects conducted by the Scripps Gerontology Center, Ohio has one of the largest aging populations in the United States. The 60+ population represents 17.3% of the total population in the state of Ohio. Currently, in Clinton County, over 16% of the population is age 60+, and by 2020 it is projected to increase by 74%. Serving our clients in future years will become more challenging as we see the wave of baby boomers turning 60. No doubt this generation will have a direct impact on a growing demand for our programs and services in our Clinton County community. Just as they have redefined every phase of life since their birth, the boomers will also redefine aging in our network, and Clinton County will hold no exception to this trend.

As in the other county levy programs, the Clinton County Elderly Services Program will continue to face demands for services as our county experiences the inevitable growth in our senior population. While I am sure there will be other challenges to face in 2005, I also remain confident that we will be able to meet these challenges head-on and continue in our endeavor of providing the best quality services to the senior adults in Clinton County.

John Hosler, President  
Clinton County Citizens for Elderly Services, Inc.

## **CLINTON COUNTY COMMISSIONERS**

Michael Curry  
Darleen M. Myers  
Rick E. Stanforth

**Administrator**  
Mark Brooker

## **CLINTON COUNTY CITIZENS FOR ELDERLY SERVICES, INC.**

**President**  
John Hosler

**Vice President**  
Marsha Snyder

Tim Hawk  
Dean Knapp  
Rev. Donald Mertz  
Donna Vandervort  
Carol Weber  
Eli Yovich

## **CLINTON COUNTY ELDERLY SERVICES PROGRAM**

In May 2003, Clinton County voters and taxpayers approved a 1-mil, five-year tax levy to support in-home community based services for the elderly.

The philosophy of the Clinton County Elderly Services Program is to foster self-determination and independence for elderly Clinton County residents through the provision of services that enable them to remain in their homes. The program recognizes the importance of the family and other informal support systems in achieving this goal and relies on the continuation of this support in order to be effective. Existing sources of reimbursement (such as Medicare, Medicaid, PASSPORT and private insurance) continue to be primary and the applicant/consumer must apply for, and diligently seek to obtain, services through these sources of reimbursement first. The program includes a co-payment feature for those recipients who are able to contribute to the cost of services based on established guidelines.

The purpose of the Clinton County Elderly Services Program is to provide information and assistance about aging concerns, services and the aging network; to provide screening, assessment, referral and case management services to eligible consumers age 65 and older who reside in Clinton County; and to provide in-home services to enable older persons to exercise self-determination and to remain as independent as possible.

Clinton County Citizens for Elderly Services, Inc. (CCCES) oversees the operation of the levy program. CCCES Board, working in conjunction with the Clinton County Commissioners, develops policy in the area of service provision, oversees budgets and works directly with Council on Aging of Southwestern Ohio (COA<sup>SM</sup>), the designated Area Agency on Aging, to administer the program. COA provides a consumer management information system, processes all billing (including consumer co-pays), provides quality monitoring and technical assistance, and provides a fiscal audit of all expenditures.

The Clinton County Community Action Program, Inc. provides intake and case management services for the Clinton County Elderly Services Program. Other for-profit and non-profit agencies perform a variety of in-home services needed by the older adults of Clinton County.

# CLINTON COUNTY ELDERLY SERVICES PROGRAM

## PARTICIPANT PROFILE

RACE			HOUSEHOLD INCOME		
	#	%	Poverty Level %	#	%
Caucasian	566	96	At or below 100%	134	23
Minority	21	4	101% - 150%	216	37
<b>Total</b>	<b>587</b>	<b>100</b>	151% - 200%	135	23
			201% poverty or above	102	17
			<b>Total</b>	<b>587</b>	<b>100</b>

GENDER			AGE GROUPINGS		
	#	%		#	%
Male	156	27	Age 60-69	101	17
Female	431	73	Age 70-79	197	34
<b>Total</b>	<b>587</b>	<b>100</b>	Age 80-89	223	38
			Age 90+	66	11
			<b>Total</b>	<b>587</b>	<b>100</b>

PHYSICAL IMPAIRMENTS		
	#	%
Low Disabilities	4	1
Moderate Disabilities	84	14
Severe Disabilities	499	85
<b>Total</b>	<b>587</b>	<b>100</b>

### AVERAGE AGE

The average age of a Clinton County ESP consumer in 2004 was 78 years old

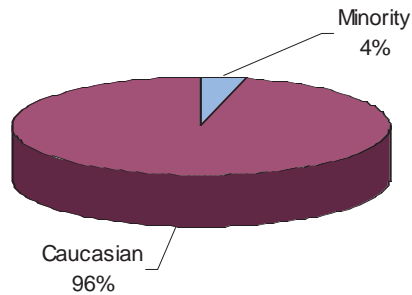
#### INCOME AND EXPENSES

- ☐ 20% of the consumers have a co-payment
- ☐ Average monthly income = \$1,214
- ☐ Average out-of-pocket monthly medical costs = \$295

#### COST COMPARISONS

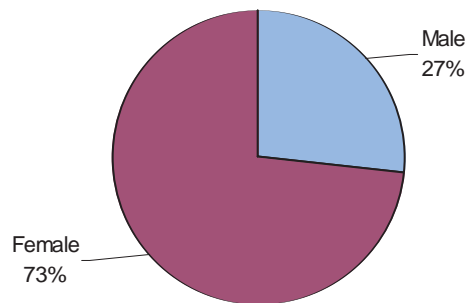
In 2004, ESP<sup>SM</sup> enabled 587 disabled Clinton County residents to remain independent and live in their own homes at an average monthly cost of \$250, compared to \$4,078 each month to live in a Medicaid nursing home.

### RACIAL BREAKDOWN OF SENIORS RECEIVING SERVICES

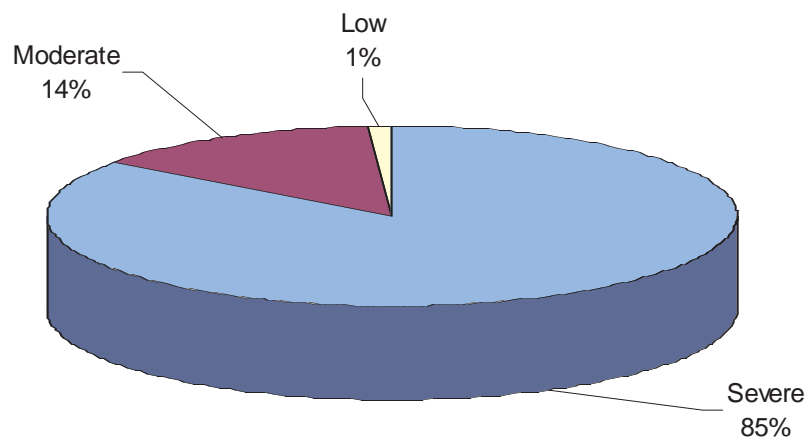


Minorities are 2.4% of the Clinton County general population (Census 2000). Four percent (4%) of Clinton County ESP<sup>SM</sup> consumers are minorities.

### GENDER BREAKDOWN OF SENIORS RECEIVING SERVICES

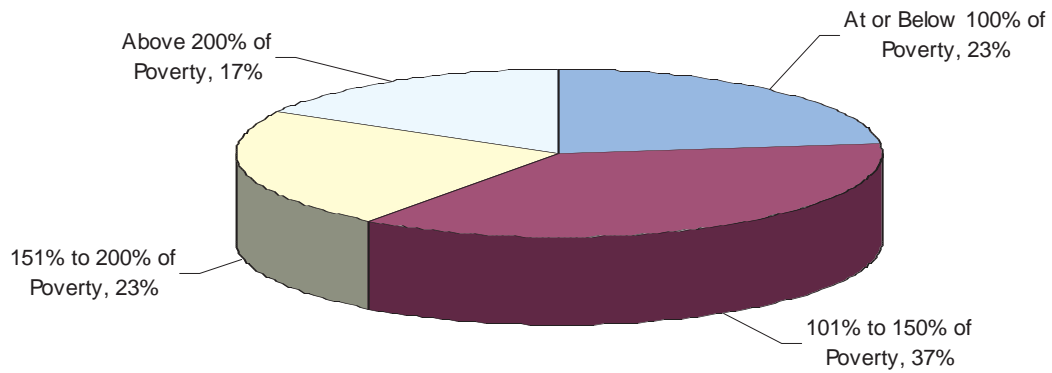


### LEVEL OF DISABILITY OF SENIORS RECEIVING SERVICES

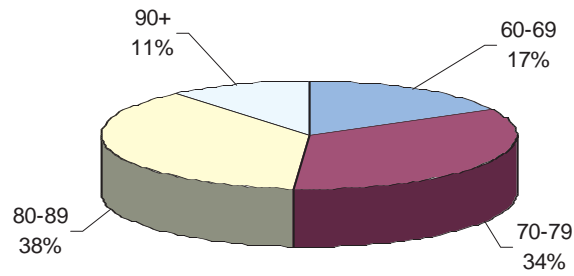




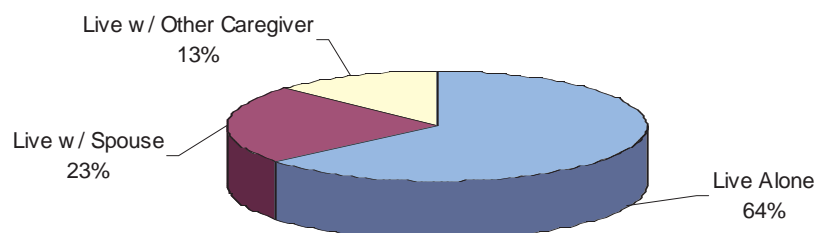
### INCOME BREAKDOWN OF SENIORS RECEIVING SERVICES



### AGE BREAKDOWN OF SENIORS RECEIVING SERVICES



### LIVING ARRANGEMENTS OF SENIORS RECEIVING SERVICES



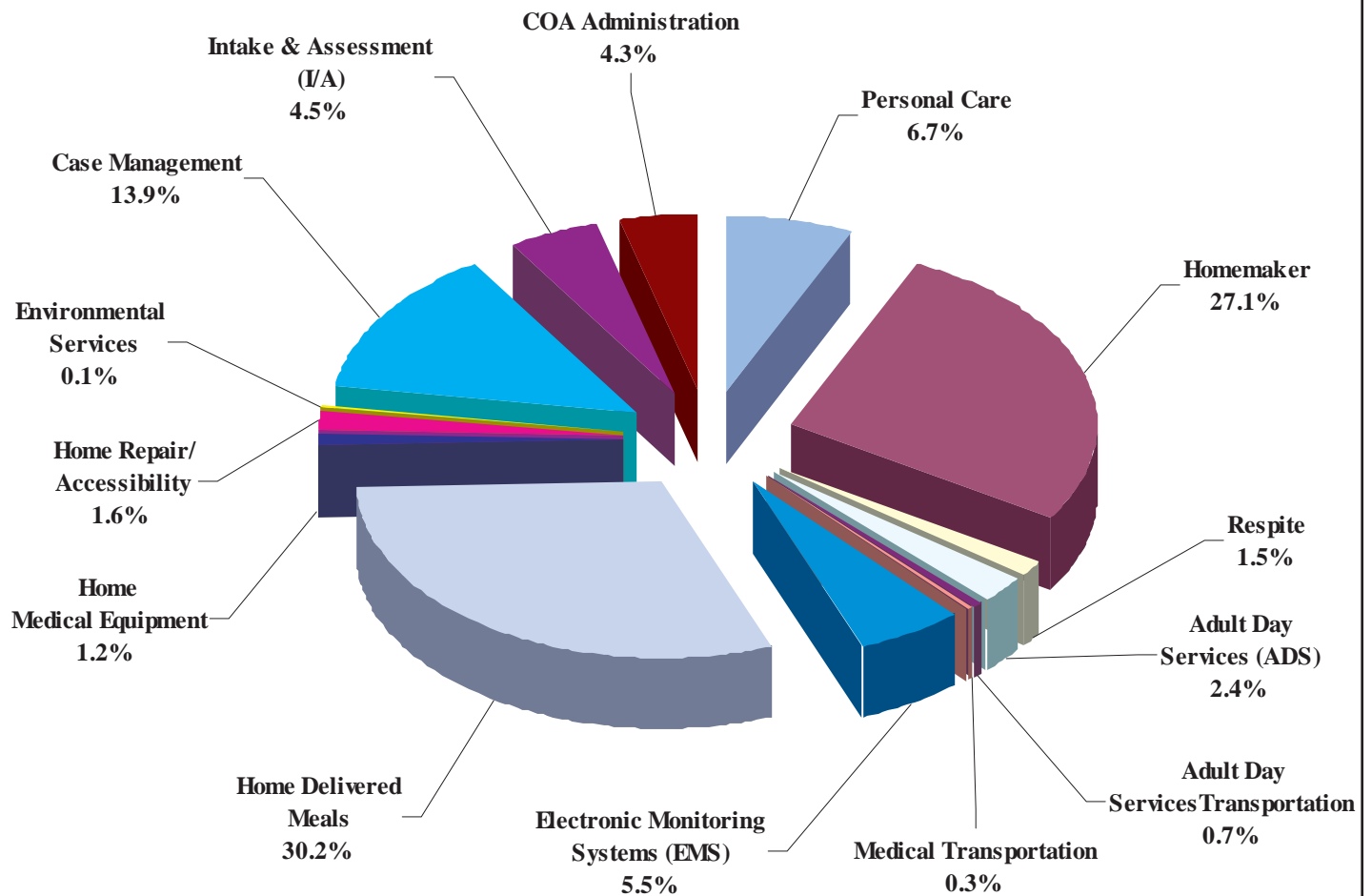
# CLINTON COUNTY ELDERLY SERVICES PROGRAM

## UTILIZATION OF FUNDS

<b>Services</b>	<b>Clients</b>	<b>Units</b>	<b>Expenses</b>
Personal Care	63	3,369	\$ 81,657
Homemaker	235	12,577	333,135
Respite	16	739	18,375
Adult Day Services	8	648	29,161
Adult Day Services Transportation	6	5,738	8,033
Medical Transportation	17	87	4,140
Electronic Monitoring Systems (EMS)	327	2,706	67,837
Home Delivered Meals	362	59,026	371,274
Home Medical Equipment	78	92	15,071
Environmental Services	5	16	989
Home Repair/Accessibility	20	21	20,131
Case Management	587		170,146
Intake & Assessment			55,479
COA Administration			52,256
<b>Total Expenses</b>			<b>1,227,684</b>
Federal, State and Other			(172,777)
Consumer Donation			(16,134)
Consumer Co-Payment			(13,931)
<b>Total Levy</b>			<b>\$ 1,024,842</b>

Administration Percentage    4.3%

# CLINTON COUNTY ELDERLY SERVICES PROGRAM EXPENSE BREAKDOWN JANUARY 1 - DECEMBER 31, 2004



## CLINTON COUNTY ELDERLY SERVICES PROGRAM PARTICIPANTS SERVED BY TOWNSHIP

Adams Township	14	Other	30
Chester Township	12	Richland Township	40
Clark Township	22	Union Township (includes Wilmington)	254
Green Township	32	Vernon Township	19
Jefferson Township	17	Washington Township	17
Liberty Township	12	Wayne Township	11
Marion Township (includes Blanchester)	100	Wilson Township	7

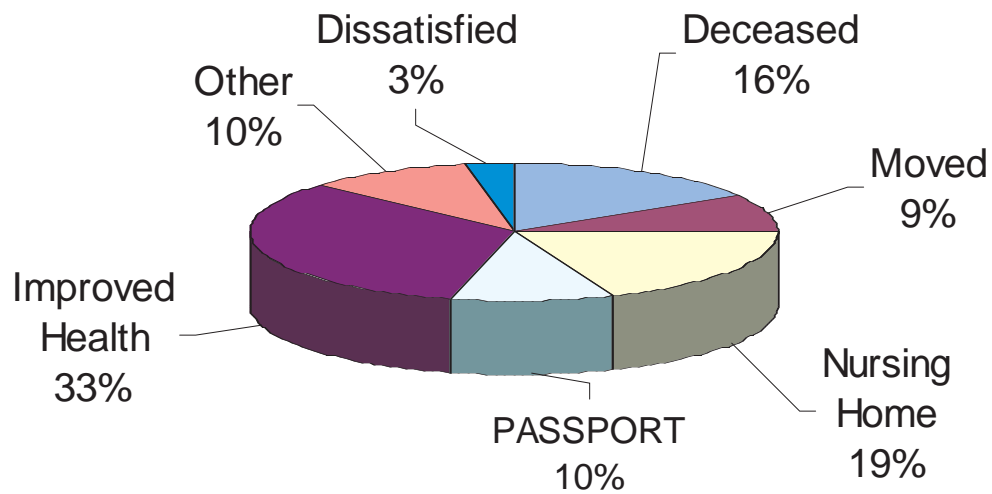
**TOTAL PARTICIPANTS SERVED    587**

### Changing Profile of the ESP<sup>SM</sup> Consumer

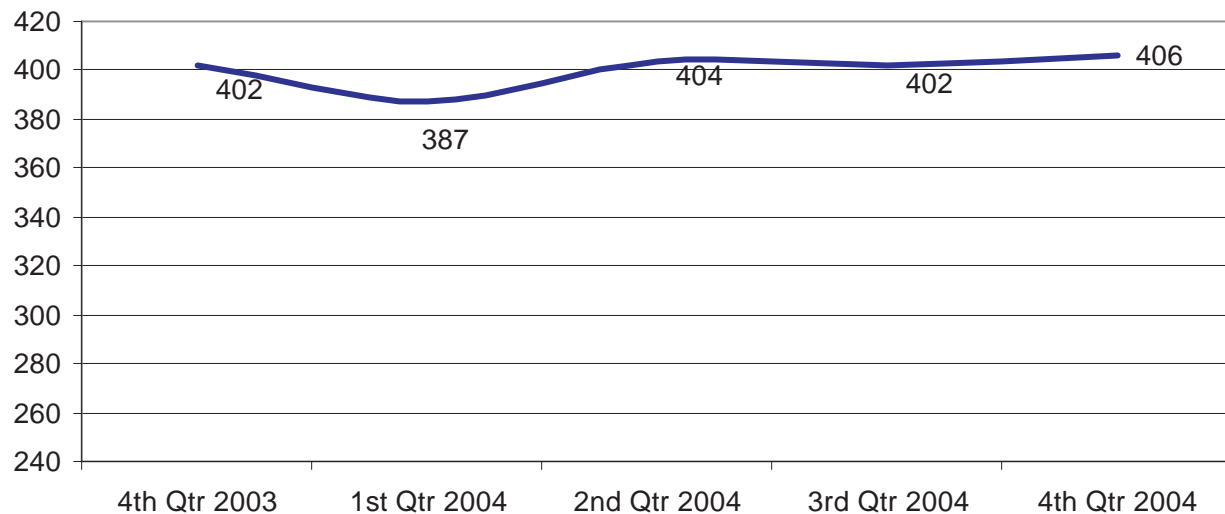
The consumer profile gives us a picture of an aging population, living longer, displaying increased disabilities, and having a greater need for services. Health care costs continue to escalate well above income growth. Given the changing economy, the Elderly Services Program<sup>SM</sup> will be challenged to be prepared to meet the growing needs of this changing population.

- ☐ Average out-of-pocket medical costs per ESP consumer for 2004 were \$295/per month, almost 1/4 of the average total income, \$1,214/month.
- ☐ Almost half (49%) of ESP consumers were 80 years of age or older.
- ☐ Eighty-three percent (83%) of all ESP consumers are at or below 200% of poverty.
- ☐ Sixty-four percent (64%) of ESP consumers live alone, an increase of 3% from the previous year.
- ☐ Forty-two percent (42%) of all ESP consumers received personal care and/or homemaking services while 62% received home delivered meals and 56% received electronic monitoring systems.

# CLINTON COUNTY ELDERLY SERVICES PROGRAM DISENROLLMENT OUTCOMES



## CCESP CENSUS, 2004



# **CLINTON COUNTY ELDERLY SERVICES PROGRAM**

## **SERVICE PROVIDERS**

Advanced Medical Equipment

Alan W. Arend

Algo Termite & Pest Control

All Gone Termite & Pest Control

American Ramp Systems

Bathblest Renovations

Bernens Medical and Pharmacy

Black Stone healthcare

Clinton County Adult Day Center, Inc.

Clinton County Community Action Program,

Deaconess Lifeline

Edenvue

Guardian Medical Monitoring, Inc.

Handy Household Helpers

Home Care Network

Home First Non-Medical

Homeowner Solutions, LLC

Lifeline Systems, Inc.

Medic One

Mercy Lifeline

Mercy Lifeline of Cincinnati

Milt's Termite & Pest Control

Mullaney's Pharmacy & Home Healthcare

Nerswick Home Services, LLC

Personal Touch Home Care of Ohio, Inc.

Response Ability Systems, Inc.

Responselink of Cincinnati

Rural/Metro of NE Ohio

S.P. Contracting, LLC

Safeway Safety Step, Inc.

Select Health Systems

Senior Independence

Spotless Maintenance Systems

Thermal-Shield Inc.

Tri-State Maintenance

U.T.S. (Universal Transportation Systems )

VRI



