

# WARREN COUNTY ELDERLY SERVICES PROGRAM



*Helping Warren County Older Adults  
Maintain Their Independence and Dignity*

**ANNUAL REPORT 2005**



# TABLE OF CONTENTS

Message from the Chairman, Warren County Elderly Services Program Advisory Council	2
“In-home services help daughter grant her mother’s wishes” Changing Profile of the ESP <sup>SM</sup> Client	3
Warren County ESP’s the compassionate and cost-effective choice Elderly Services Program Advisory Council Warren County Commissioners	4
“In-home services keep family together”	5
Client Profile	6, 7
How Funds are Used	8
Expenses by Percentages	9
Where Clients Live	10
Reasons for Leaving Warren County ESP and Number Served	11
Warren County ESP Service Providers	12



## **WARREN COUNTY ESP GROWS FROM A DREAM**

On behalf of Warren County Elderly Services Program Advisory Council, it is my pleasure to present the Annual Report for 2005.

As you will see, we served 1,712 people. They are people who clearly need and benefit from our program.

Four years ago, Warren County ESP was just a dream. Fortunately, our county commissioners and voters recognized that, despite our reputation as a place for young families, we have a growing population of older adults. A .96-mill levy was approved in 2002 to start our program, but already we see it cannot keep pace with the need. We are grateful to the citizens who have supported our mission and shown that they want the elders among us to remain in their own homes and communities for as long as possible.

Our typical client is a woman in her 80s who lives alone on a very modest income. Because of age and health problems, she cannot get to the store on her own or clean her house. She may need grab bars installed in her bathtub and an emergency monitoring device to help keep her safe. But she's not ready to go to a nursing home, and with a little help, she doesn't have to.

Home delivered meals, housekeeping help, home safety upgrades and other services can allow her to stay in the familiar surroundings of home. Without the Elderly Services Program<sup>SM</sup>, however, she could be forced into institutional care simply to access Medicaid to pay for her care. The monthly cost to the taxpayers would then increase ten-fold.

As I write this in June 2006, I'm thinking of several challenges ahead. We must seek to renew or increase our county tax levy which expires at the end of 2007. Already, we have more than 200 older adults on a waiting list for services.

We also must assure that people who need the Elderly Services Program are aware of it before it's too late to help them. We often hear of family members who have struggled to provide care and then regretfully placed an elderly parent or grandparent in a nursing home because they were not aware of other options.

We pledge to continue to provide high-quality care, to be good stewards of the public's money, to strive for improvement, and to advocate for the older adults of Warren County.

Bernard Eichholz  
Warren County Elderly Services Program Advisory Council

## In-home services help a daughter grant her mother's wishes

Since the death of her husband last April, grief and loneliness have added to the struggles Tulja Mahendra faces in caring for her elderly mother.

"My friend left me and now I am alone," said Mrs. Mahendra, 67, of Mason. "Sometimes it is very hard, very hard."

Mrs. Mahendra's mother, Shanta Bai, 82, came to live with her daughter and son-in-law from India several years ago. She receives PASSPORT and Mrs.

Mahendra is enrolled in Warren County's Elderly Services Program. PASSPORT provides personal care and other services for Mrs. Bai, who is on oxygen because of pulmonary fibrosis. Mrs. Mahendra, who also has health problems, receives weekly help with cleaning and laundry from the ESP.



"It would be very bad for my mother in a nursing home," Mrs. Mahendra said. "She doesn't understand English and she doesn't eat American food. She has begged not to go to a nursing home. I am not a strong lady myself, so it is good to have help."

### Warren County ESP Total Clients Served: 1,712

#### Changing Profile of the ESP<sup>SM</sup> Client

The client profile gives us a picture of an aging population living longer, with increased disabilities and a greater need for services. As health care costs escalate, the Elderly Services Program must prepare to meet the growing needs of older adults.

- ☐ Average out-of-pocket medical costs per Warren County ESP client for 2005 were \$299/month. The average monthly income per client was \$1,535.
- ☐ Half of clients were 80 years of age or older. The average age of the ESP client in 2005 was 78.
- ☐ Seventy-three percent of clients had a severe disability, a three percent increase over last year.
- ☐ Sixty-nine percent of clients are at or below 200 percent of the federal poverty level.
- ☐ Fifty-four percent of clients live alone.
- ☐ Twenty-three percent of clients contribute to the cost of their care.
- ☐ Forty-nine percent of clients receive personal care and/or homemaking, while 66 percent receive home delivered meals and 41 percent receive electronic monitoring.

# ESP is the compassionate and cost-effective choice

The Warren County Elderly Services Program helps older adults remain independent within the familiar surroundings of their own homes for as long as possible.

Nursing homes are often necessary, but most people do not want to go there before their time. With the help of services such as home delivered meals and housekeeping, many older adults can delay or prevent nursing home placement.

Of all the options for long-term care, services in the home are also the least expensive. It costs about \$344 a month per client in Warren County's Elderly Services Program, compared with \$4,800 a month for nursing home care.

Warren County's Elderly Services Program is supported by a local tax levy, funds from Title III of the Older Americans Act, and co-payments from clients who are able to contribute to the cost of their care. Donations are also accepted for the home delivered meals program.

The program is administered by Council on Aging of Southwestern Ohio (COA<sup>SM</sup>) in cooperation with the Warren County Commissioners and Warren County Community Services, Inc.

Other agencies provide a variety of services, such as home repair and electronic monitoring devices, that help the older residents of Warren County remain as independent as possible for as long as possible.

**Cost is \$344 a month  
per client in  
Warren County's Elderly  
Services Program**

**Cost is \$4,800 a month for  
nursing home care**

## **Warren County Elderly Services Program Advisory Council**

---

**Chair,** Bernard Eichholz

**Vice Chair,** Nick Nelson

**Secretary,** Ann Shann

Mark Clark

David R. Gully

Freda Kilburn

Ann Munafo

## **Warren County Commissioners**

---

C. Michael Kilburn

Pat Arnold South

David G. Young

**Administrator,** David R. Gully

## In home services keep family together

Billie Jean Becknell's life changed on May 3, 2003. That day, she was riding in a car with her brother. It was raining hard and he went into a skid. The car rose from the pavement and flipped four times, landing back on its wheels.

Both of them were pinned and had to be cut out. Billie Jean's head had slammed into the windshield frame and her hands were broken. Her injuries required two surgeries and 400 stitches.

"I don't know how I'm still alive, to be honest with you," said Billie Jean, 74.

Before the accident, there was some question about where Billie Jean would live, since she was unable to keep her house following the death of her husband two years earlier. The accident settled the question. Once she left the hospital and rehabilitation facility, Billie Jean moved into the Mason home of her daughter, Lisa Becknell and son-in-law, Steve Holt.

Lisa and Steve struggled at first to get the medical equipment and help they needed to keep Billie Jean in their home. Both work full-time – Lisa at Bunnell Hill Construction, a division of Henkle-Schueler, and Steve at Home Depot.

"Our jobs have been very flexible, but we couldn't give her the 24-hour care she needed," Steve said.

Finally they heard about Council on Aging of Southwestern Ohio and the Warren County Elderly Services Program. Through the program, Billie Jean receives home delivered meals, an emergency response device, personal care and help with laundry.

"I know where I'd be if I didn't have this," Billie Jean said. "I'd be in a nursing home. The meals are real good. I've got to eat right because I have kidney problems."



The emergency response device helped one night when Billie Jean rolled back in a recliner and couldn't get out.

"She couldn't yell loud enough to wake us up," Lisa said. "So she used the lifeline and they called us. You feel kind of silly when they ask you, 'Can you go get your mother out of the chair?' and she's in the next room. But I was so glad they were there."

Since the accident, Billie Jean has had several small strokes which have caused one hand to cripple and left her somewhat unsteady on her feet. But with help from ESP and support from her family (Lisa and Steve handle weekdays and Billie Jean's sister, Norma Smith, takes over on weekends), she can remain at home with those she loves.

Postscript: On June 3, 2006, Billie Jean, her niece and another pedestrian were struck by a motorcycle as they crossed the street. She suffered compound leg fractures and a head injury. She is recovering in a nursing facility and expects to return home.

"She's in good spirits," Lisa said. "She said, 'Here I am again.'"

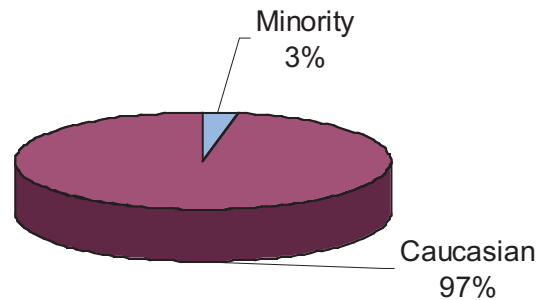
# WARREN COUNTY ESP CLIENT PROFILE

## Racial Profile

Caucasian	1,667
African-Americans & other Minorities	45
Total	1,712

Minorities are 1.8% of the Warren County general population (Census 2000). Three percent of Warren County Elderly Services Program clients are African-Americans or Asians.

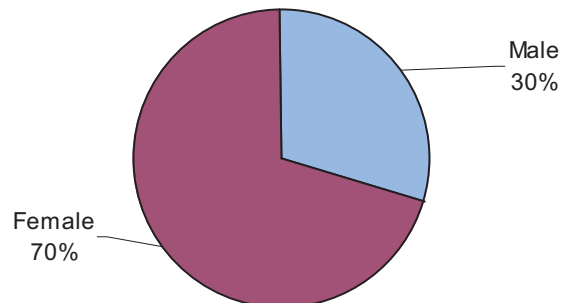
## RACE OF SENIORS RECEIVING SERVICES



## Gender

Male	515
Female	1,197
Total	1,712

## GENDER OF SENIORS RECEIVING SERVICES

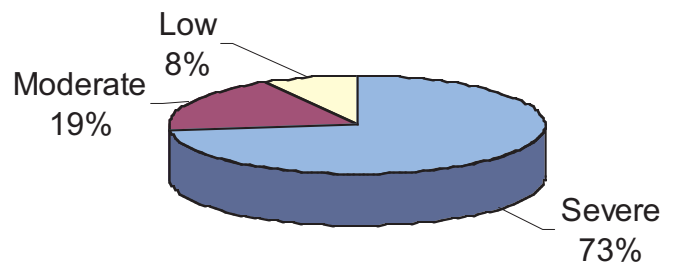


## Level of Disability

Low Disabilities	130
Moderate Disabilities	337
Severe Disabilities*	1,245
Total	1,712

\* Severe disability means impairment of two or more activities of daily living, such as bathing and eating.

## LEVEL OF DISABILITY OF SENIORS RECEIVING SERVICES





# WARREN COUNTY ESP CLIENT PROFILE

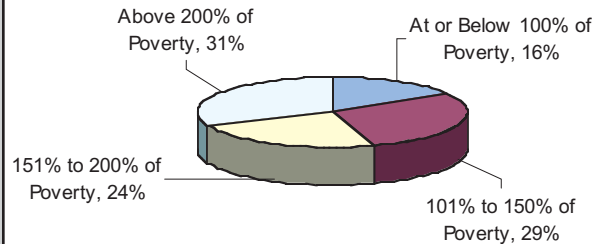
## Income and Expenses

### Income:

69% at or below 200% of FPL\*  
31% above 200% of FPL

- ♦ Average monthly income of clients = \$1,535
- ♦ Average monthly out-of-pocket medical costs per client = \$299
- ♦ Twenty-three percent of the clients contribute to the cost of their care

## INCOME OF SENIORS RECEIVING SERVICES

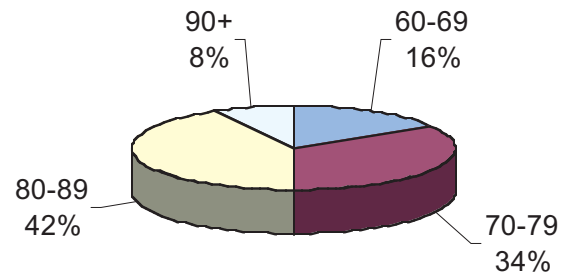


## Age

Age 60 - 69	277
Age 70 - 79	589
Age 80 - 89	712
Age 90+	134
Total	1,712

The average age of the Warren County ESP client in 2005 was 78 years old.

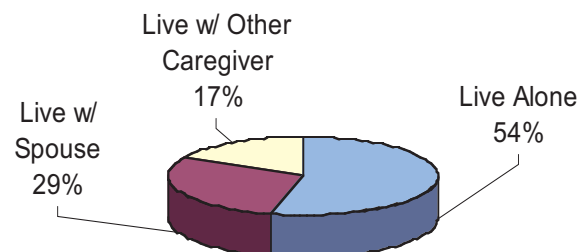
## AGE OF SENIORS RECEIVING SERVICES



## Living Arrangements

Live with Spouse	497
Live with Other Caregiver	291
Live Alone	924
Total	1,712

## LIVING ARRANGEMENTS OF SENIORS RECEIVING SERVICES



\*FPL - Federal Poverty Level for 2005: an annual income of \$9,570 for one person

# WARREN COUNTY ELDERLY SERVICES PROGRAM

## HOW FUNDS ARE USED

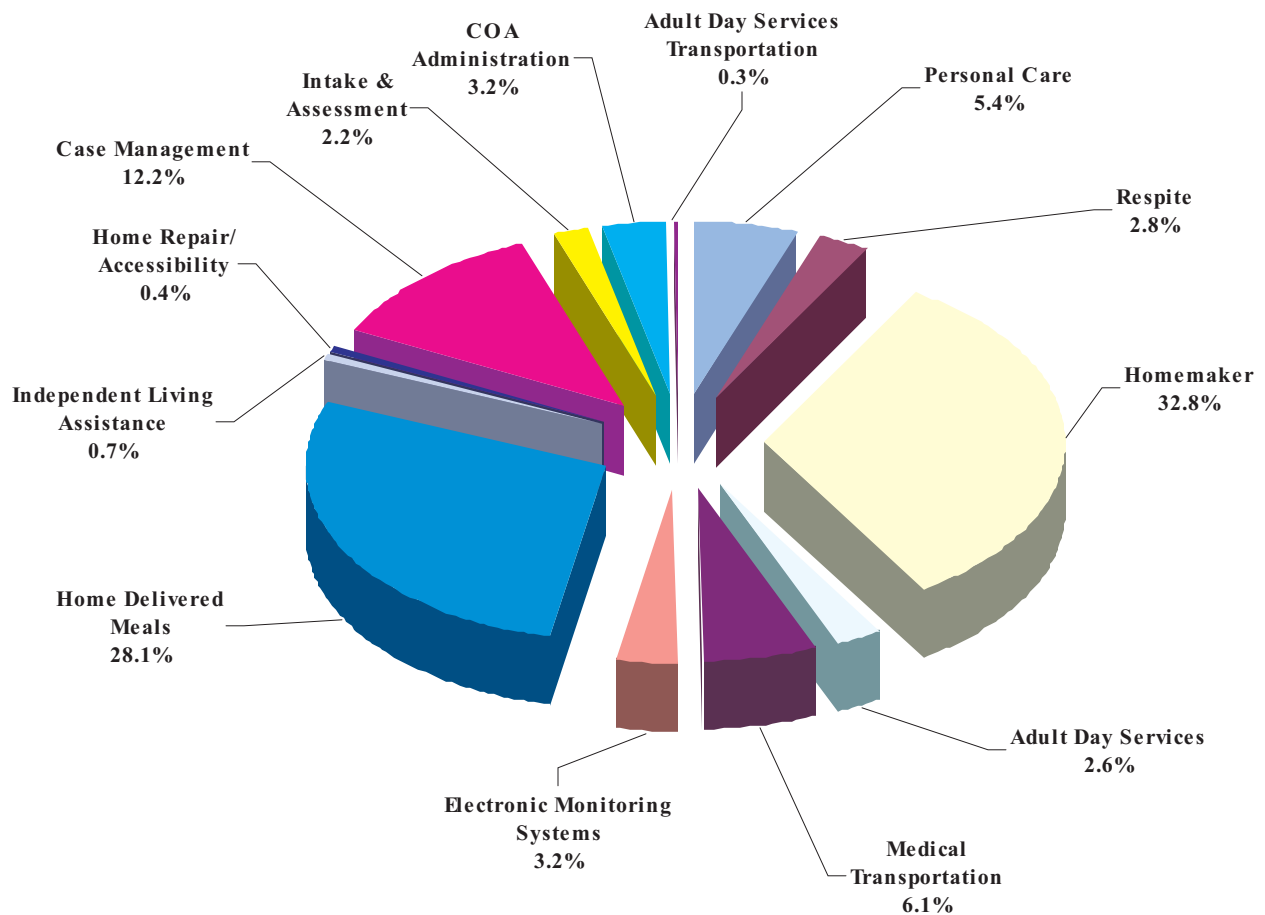
**Total Clients Served: 1,712**

	<b>Clients</b>	<b>Service Units</b>	<b>Expenses</b>
Personal Care	189	9,242	\$236,010
Homemaker	749	57,929	1,418,880
Respite	40	4,900	123,083
Adult Day Services	29	2,302	112,387
Adult Day Services Transportation	5	1,912	13,278
Medical Transportation	248	6,256	265,617
Electronic Monitoring Systems	698	6,285	138,384
Home Delivered Meals	1,197	200,115	1,212,576
Independent Living Assistance	85	1,251	31,119
Home Repair/Accessibility	68	70	17,780
Case Management	1,712		529,165
Intake & Assessment			95,423
COA <sup>SM</sup> Administration			137,235
<b>Total Expenses</b>			<b>4,330,937</b>
Federal, State and Other			(235,777)
Consumer Donation			(56,651)
Consumer Co-Payment			(52,767)
 Total Administration	 3.2%	 <b>Total Levy</b>	 <b>\$3,985,742</b>

# **WARREN COUNTY ELDERLY SERVICES PROGRAM**

## **EXPENSES BY PERCENTAGES**

### **JANUARY 1 - DECEMBER 31, 2005**

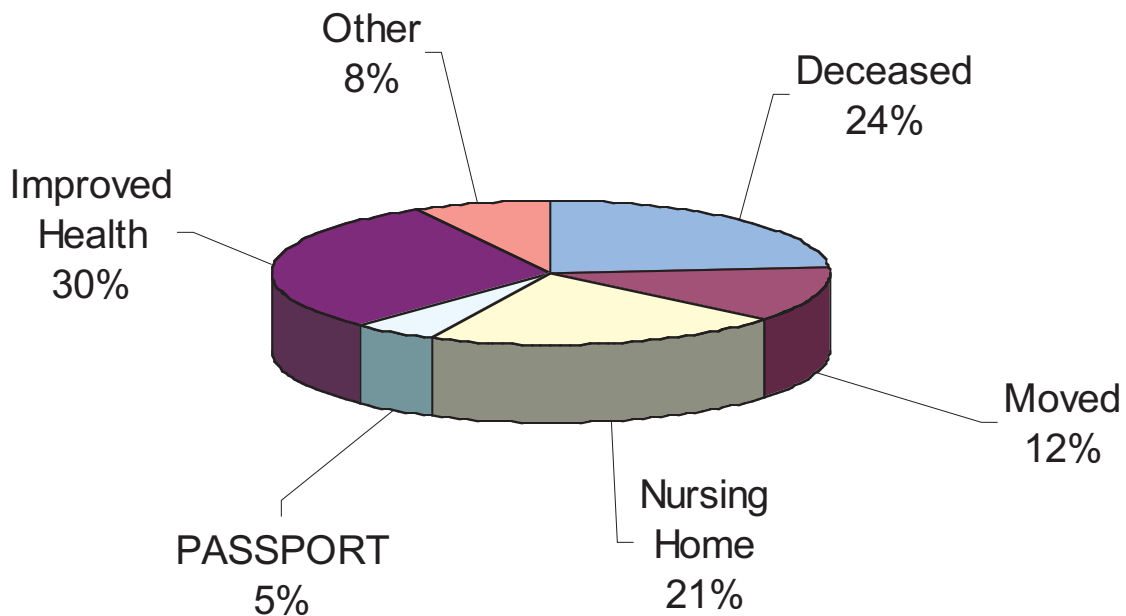


## WARREN COUNTY ELDERLY SERVICES PROGRAM WHERE CLIENTS LIVE

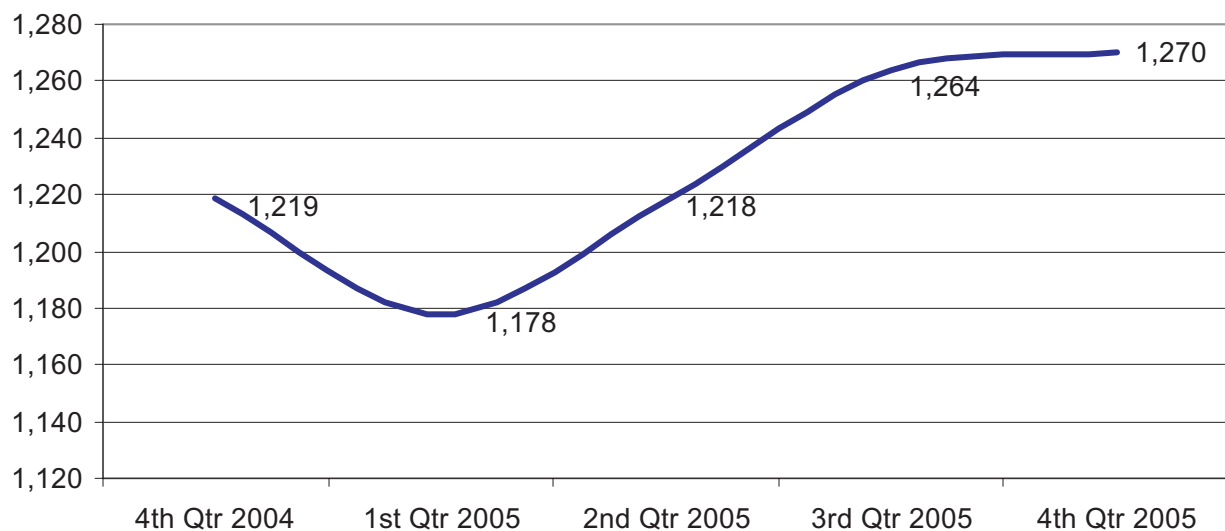
Carlisle Village	56	Middletown City (Warren County)	19
Clear Creek Township	36	Morrow Township	37
Deerfield Township	123	Other	20
Franklin Township	412	Salem Township	62
Hamilton Township	60	South Lebanon Village	48
Harlan Township	33	Springboro City (Warren County)	64
Lebanon City	262	Turtle Creek Township	100
Loveland City (Warren County)	8	Union Township	38
Maineville Village	48	Washington Township	5
Mason City	160	Wayne Township	49
Massie Township	12	Waynesville Village	60

**Total Clients Served: 1,712**

## WARREN COUNTY ELDERLY SERVICES PROGRAM REASONS WHY CLIENTS LEAVE



W C E S P Number Served , 2005



# WARREN COUNTY ELDERLY SERVICES PROGRAM

## SERVICE PROVIDERS

---

Acare Home Health	LifeSpan
Active Day of Cincinnati	LifeSphere
Alan W. Arend	McKnight Terrace
Almost Family	Meda-Care Transportation, Inc.
American Nursing Care Dayton	Medic One, Inc.
American Ramp Systems	Medicall, Inc.
Bathblest Renovations	Mercy Lifeline
Black Stone healthcare	Mercy Lifeline Cincinnati
Caring Hearts Home Health Care	Middletown Area Senior Citizens, Inc.
Charter Home Services	Millenium Nursing Agency
Clinton County Adult Day Center, Inc.	Nerswick Home Services LLC
Comfort Keepers #123	Nurses Care, Inc.
Comfort Keepers #172	Otterbein Lebanon Adult Day Service
Comfort Keepers #178	Personal Touch Home Care of Ohio, Inc.
Comprehensive Home Health Care Services	Response Ability Systems
Deaconess Lifeline/Elderlife	Responselink of Cincinnati
Edenview	Rural Metro Ambulance
Emerson Heating & Cooling Company	Safeway Safety Step, Inc.
Fidelity Health Care (CareView Home Health)	Senior Independence
First Choice Medical Staffing	Senior Independence Adult Day Services
Guardian Medical Monitoring, Inc.	Senior Resource Connection
Handy Household Helpers	SP Contracting
Helping Hands Healthcare	Spotless Maintenance Systems, Inc.
High Quality Staffing LLC	Superior Home Care, Inc.
Home Care Network, Inc.	The Visiting Nurse Association of Greater Cincinnati & Northern KY
Home First Non-Medical	Thermal-Shield Inc.
Home Helpers	Tri State Maintenance
Homeowner Solutions	TriHealth Lifeline
House Mates	Universal Transportation Systems (U.T.S.)
Interim HealthCare of Cincinnati, Inc.	V & N Services, Inc.
International Quality Health Care Corp.	VRI
Jewish Community Center of Cincinnati	Warren County Community Services, Inc.
Jewish Family Service of the Cincinnati Area	