

Welcome

In 2022, Clinton County's Elderly Services Program (ESP) served 600 county residents. The program is a great value for taxpayers, costing about \$364 per client per month, compared to more than \$6,000 per month for Medicaid-funded care in a nursing facility.

In recent years, it's become more challenging to meet the needs of our county's older adults. The ongoing national shortage of homecare workers is impacting ESP's ability to deliver the services our clients need, primarily because service providers are struggling to hire and retain staff. Inflation and the rising cost of services is also having an impact, resulting in higher-than-expected program costs.

However, ESP's administrator, Council on Aging (COA), has done an excellent job managing capacity within the program and identifying cost savings. For example, when a major service provider left the program in 2022, COA staff transitioned all impacted clients to existing providers and brought in new providers to expand capacity and foster client choice. As of this writing, no ESP clients were waiting to receive home care assistance services. The same cannot be said in other counties.

To save costs without impacting service delivery, COA has been connecting ESP clients to benefits they may be eligible for through other payer sources, including Medicare Advantage plans. In 2022, this work resulted in cost savings of more than \$24,000.

This advisory council is committed to finding new ways to meet the needs of our county's older adults. In 2022, we worked with COA to create an application process for organizations to apply for funding to be used for capital projects or one-time expenditures to deliver services to county residents age 60 and over. The goal of this effort was to help the county's senior centers and other non-profit organizations rebound from the pandemic. We awarded funding to two senior centers in the county and look forward to sharing the results in a future report.

On behalf of the Clinton County Elderly Services Program Advisory Council, I thank you for taking time to better understand this important program and how your tax dollars are being used. I hope you will continue reading, paying special attention to the stories which highlight the program's impact on two residents, Mary and Polly. Thank you for your continued support of this important program.



Nicole Rodman
Chair, Clinton County
Elderly Services Program
Advisory Council

ESP is a Community Partnership

Clinton County Commissioners

Brenda K. Woods, Kerry R. Steed, Mike McCarty

Clinton County Elderly Services Program Advisory Council

Nicole Rodman, Chair; Deacon Bob Baker; Gene Breckel; Ray Camp; Sue Caplinger; Donald Gephart; Timothy Hawk; Duane Weyand

Administered by Council on Aging

2333 Rombach Ave., Wilmington, OH 45177
(937) 584-7200 www.help4seniors.org



What is ESP?

The Elderly Services Program (ESP) helps eligible county residents age 65 and older remain safe and independent in their homes, providing help with activities of daily living (bathing, cleaning, cooking, transportation and more), and filling gaps in care that may already be provided by family caregivers.

ESP offers flexible care to meet clients' changing needs. Eligibility and care needs are determined during an in-home assessment by a professional care manager who coordinates and monitors clients' care. Income is not an eligibility factor for ESP, but some clients have a co-payment based on their income.

The program is operated by Council on Aging (COA) via a contract with Clinton County Commissioners, who appoint a board to advise on program needs and policies. Provider agencies deliver ESP services via competitive contracts with COA. In some cases, clients may hire their own service providers. Clients, caregivers and taxpayers round out the partnership. ESP is a compassionate and cost-effective alternative to nursing home care.

Cost to Taxpayers

\$364
Monthly costs for
ESP services

VS

\$6,000+
Monthly costs for
nursing home care

What is COA's Role?

As the program's operator, COA provides: eligibility assessments; care management; program development; provider management; data analytics; financial services; information technology; quality improvement and community engagement. As a state-designated Area Agency on Aging, COA provided these additional services to county residents in 2022:

58,334

requests for information
and referral fulfilled

1,473

individuals throughout COA's service area
received support to transition from one
care setting to another

\$283,226

in Title III funding allocated to local organizations
for congregate meals, legal assistance, wellness
education, caregiver support, transportation and
other supportive services

244

Clinton County residents received home- and
community-based services through Medicaid-
funded programs



2022

ANNUAL REPORT

Clinton County Elderly Services Program

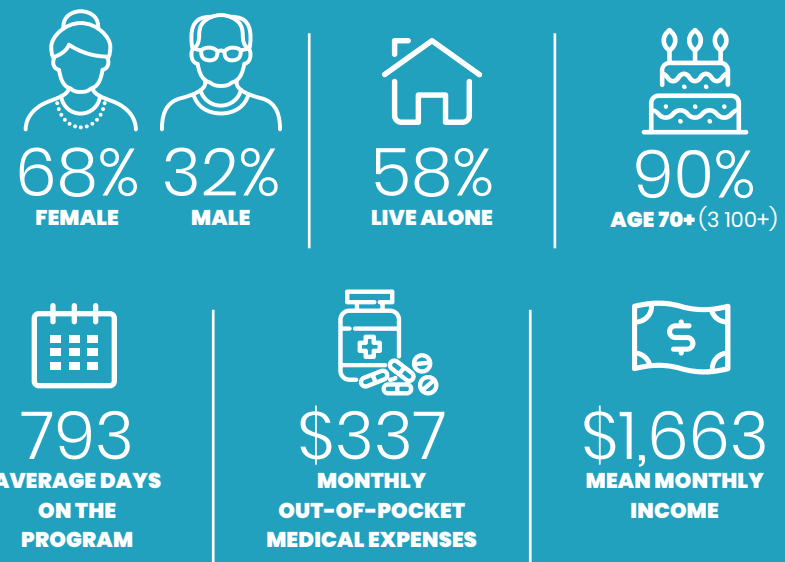




2022 Client Stats

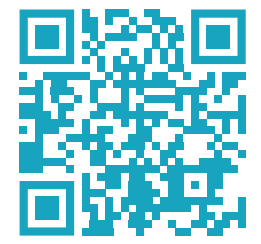
Clinton County ESP clients are caught in the middle: with income too high to qualify for Medicaid, but too low to pay for private in-home care. They need help with basic activities like personal care and transportation. Between raising a family and going to work, family members help as much as they can, but ESP fills in gaps in care so our older neighbors and loved ones can continue to live independently in their homes and communities. ESP is a program that benefits our entire community.

600 Clients Served



Success Stories

To read these full success stories and more, scan the code with your mobile device or visit www.help4seniors.org/ccesp2022



Council on Aging grows provider network in Clinton County

One of Council on Aging's (COA) roles as administrator of the Elderly Services Program in Clinton County is to contract with qualified service providers to deliver the services clients enrolled in the program need in order to remain independent in their homes. In 2022, COA added several new home care assistance providers and reassigned more than 80 clients who were impacted by a contract termination. The result: unlike older adults in other parts of southwestern Ohio who've been impacted by the national homecare workforce shortage, Clinton County ESP clients are quickly matched with a service provider to meet their homecare needs.



Creative solutions help meet common needs of older adults

Many older adults enrolled in the Clinton County Elderly Services Program want to do as much for themselves as they can. To support them in this goal, and help prevent accidents and injuries, Council on Aging and the Clinton County Elderly Services Program Advisory Council have identified creative ways to help ESP clients get the support they need to remain independent in their homes.



Elderly Services Program helps older adults live life on their own terms

Despite multiple chronic health conditions and disabilities, Clinton County residents Mary, 68, and Polly, 90, are able to live independently in their homes because of services they receive through the county's Elderly Services Program. "It's very important for me to stay in my home," Mary said. "This way, I have the freedom to live how I want."



Expenses + Revenue

How tax dollars are spent

ESP would not exist without the generous support of voters. A county tax levy in place since 1998 provides 87 percent of ESP's funding. The most recent tax levy was approved by 60 percent of voters in 2021. The 2.35-mill levy costs property owners \$64.28 per \$100,000 of property valuation annually. COA's goal is to ensure the highest quality services at the lowest cost in order to serve as many people as possible with the tax dollars available.

As the Area Agency on Aging for southwestern Ohio, including Clinton County, COA leverages state and federal funding to cover 10 percent of ESP expenses. Additional funding comes from voluntary client donations and client co-payments.

Revenue

Federal and State (via Council on Aging)	\$193,118
Client Donations and Co-payments	\$44,219
Clinton County Elderly Services Levy	\$1,623,551
TOTAL REVENUE	\$1,860,888

Expenses

SERVICE	CLIENTS SERVED	SERVICE UNITS	COST
Care Management	600	5,133 months	\$287,828
Electronic Monitoring System	342	2,985 months	\$78,131
Homemaking	312	16,776 hours	\$542,259
Home-Delivered Meals	228	32,069 meals	\$399,427
Home Medical Equipment	92	117 items	\$30,104
Minor Home Repairs	60	68 jobs	\$97,790
FastTrack Home Care Management	54	117 months	\$45,184
Personal Care	38	1,318 hours	\$55,395
Consumer Directed Care	21	7,829 hours	\$121,632
Transportation	20	468 one-way trips	\$55,915
Adaptive Cleaning Equipment	18	18 items	\$1,644
Respite	16	721 hours	\$7,088
Overnight Respite*	3	22 nights	\$13,662
Environmental Services**	2	5 jobs	\$4,725
Administration	N/A	N/A	\$116,803
Intake and Assessment	N/A	N/A	\$3,301
EXPENSES			\$1,860,888

Clinton County ESP services are funded by a special tax levy. ESP does not supplant care provided by families but rather secures the necessary additional care the family is unable to provide. ESP expects families to take responsibility to care for family members to the fullest extent possible. ESP does not discriminate on the basis of age, gender, race, color, religion (creed), sexual orientation, gender expression or identity, national or ethnic origin (ancestry), marital status or disability.

*Service made possible by Federal Older Americans Act funding drawn down by Council on Aging. Levy dollars were not used for this service.

**Pest control, major housekeeping and waste removal.