

Choose MyPlate for a Healthy Meal

MyPlate (<https://www.myplate.gov/>) provides a visual guide of how many servings of each food group you should eat each day. To ensure you eat plenty of rich-nutrient foods, plan your meals to include a variety of food groups. foods, try to plan your meals to include a variety of foods.



Fruits

FOCUS ON WHOLE FRUITS

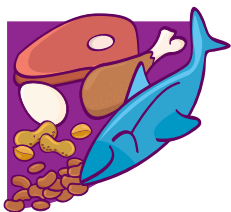
- Try to eat 2 servings each day.
- Fruit can be fresh, canned, frozen, or dried.
- Fruit can be whole, cut-up, pureed, or cooked.
- One serving is equal to 1 cup of raw or fresh fruit, half a cup of dried fruit, or 1 cup of 100% fruit.



Vegetables

VARY YOUR VEGGIES

- Try to eat 2 to 3 servings each day.
- Vegetables can be raw or cooked and fresh, frozen, canned, or dried.
- Vegetables can be whole, cut-up, or mashed.
- One serving is equal to 1 cup of raw or cooked veggie or 2 cups of leafy greens (like spinach).



Protein

VARY YOUR PROTEIN ROUTINE

- Try to eat 5 to 6 ounces each day.
- One serving is equal to ¼ cup of beans, lentils, or nuts, 1 ounce of meat, 1 egg, or 1 tablespoon of nut butter.
- Choose meat and poultry products that are lean or low in fat, like 93% ground beef or chicken breast.



Grains

MAKE HALF YOUR GRAINS WHOLE GRAINS

- Try to eat 5 to 9 ounces each day.
- Any food made from wheat, rice, oats, cornmeal, barley, or another cereal grain is a grain food.
- Grains are either whole grains or refined grains.
- Of the grains you eat, try to make at least half of them whole grains.
- If you eat refined grains, choose to eat grains that are “enriched” with important vitamins and minerals.
- One serving is equal to a 1-ounce portion.



Dairy

MOVE TO LOW-FAT OR FAT-FREE DAIRY

- Try to eat or drink 3 servings each day.
- A serving is equal to 1 cup of milk, soy milk, or yogurt or 1 ½ ounces of hard cheese.

