

BCESP

*Helping older adults maintain their
independence in Butler County*

**ANNUAL REPORT
2004**

TABLE OF CONTENTS

| | |
|---|------|
| Message from the BCCES Board President | 2 |
| Commissioners/Butler County Citizens for Elderly Services, Inc. | 3 |
| Butler County Elderly Services Program | 4 |
| Participant Profile | 5 |
| Participant Profile by Percentages - Pie Charts | 6, 7 |
| Utilization of Funds | 8 |
| Percentage of Expense Breakdown | 9 |
| Participants Served by Township | 10 |
| Disenrollment Outcomes/BCESP Census 2004 | 11 |
| Service Providers | 12 |

A MESSAGE FROM THE BCCES BOARD PRESIDENT

On behalf of the Butler County Citizens for Elderly Services (BCCES), it is my pleasure to present the Annual Report for 2004.

This year proved to be another challenging one for the Butler County Elderly Services Program. This was the third year of the five-year levy cycle and enrollment continued to be at an all time high. We began the year with around 375 clients on the waiting list and ended the year with almost twice that many. A waiting list for home delivered meals was a reality in late summer, which is also the time we were forced to close enrollment in homecare and home delivered meal services. As you can see, the demand for services provided through the Butler County Elderly Services Program continues to grow, as does the aging population.

According to the Ohio Long-Term Care Research Project conducted by the Scripps Gerontology Center, Ohio has one of the largest aging populations in the United States. The 60+ population represents 17.3% of the total population in the State of Ohio. In Butler County, over 14% of the population is 60+, and by 2020 it is projected to increase by 74%!

Our work is cut out for us in the years ahead. We must begin looking at enrollment criteria and additional ways to increase our revenue in order to keep up with the demand and prepare ourselves for future growth in our Butler County communities.

In spite of the waiting list, you will see that we were able to serve 3,009 clients in Butler County in 2004. (This was a decrease of 340 clients from the previous year.) The average age of an ESP client on the program continued to be 79 years of age, with 74% having severe disabilities. The average monthly income of our client was \$1,419, and Homemaker Services and Home Delivered Meals continued to consume the greatest percentage of the funding.

The BCCES Board would like to once again thank the dedicated staff, as well as the service provider network. We appreciate all of their support and hard work. We remain equally grateful to the taxpayers and Butler County Commissioners who continue to support us in our efforts. Our Butler County community is counting on us to provide the best possible care and quality services to our aging population now and in the future. We remain committed and don't plan to let them down.

Ralph Connor, President
Butler County Citizens for Elderly Services, Inc.

BUTLER COUNTY COMMISSIONERS

Michael A. Fox
Charles Furmon
Gregory V. Jolivette

Derek Conklin, Administrator

BUTLER COUNTY CITIZENS FOR ELDERLY SERVICES, INC.

President

Ralph Connor

Vice President

Carol Bidwell

Treasurer

Melvin Baker

Secretary

Marlena Richards-Cox

Marilee Broscheid
Fred DeBiasi
Kathleen Dudley
Dr. Jennifer M. Kinney
Karen Lowery
Janet Miller
Lena Saylor
Dr. James Scott
Helen Smith
Jim Weybright
Al Zenz

BUTLER COUNTY ELDERLY SERVICES PROGRAM

The Butler County Elderly Services Program (BCESP), by providing in-home services, enables older adults to stay in their own homes, thereby retaining their independence and dignity. The provision of services at home will delay or prevent nursing home placement.

We can no longer afford to meet the long-term care needs of Butler County's older adults primarily through nursing home care at a cost of more than \$3,770 a month for each resident. The long-term care needs of many older adults are met by providing services for them in their homes at a cost of \$318 per month for each client.

Most older adults want to stay in their own homes and remain independent for as long as possible. Those in need of in-home services can stay in their own homes only if such services are readily available. The Butler County Elderly Services Program provides in-home services for eligible residents 60 years of age or older and also provides peace of mind for their families. The program includes a co-payment feature for those recipients who are able to contribute to the cost of the services based on established guidelines.

The Butler County Citizens for Elderly Services, Inc. (BCCES) continues to oversee the operation of the levy program. BCCES develops policy in the area of service provision, oversees budgets and works directly with Council on Aging of Southwestern Ohio (COASM), the designated Area Agency on Aging, to operate the program. COA provides a Client Management Information System, processes all billing (including client co-pays), provides quality monitoring and technical assistance, reporting, program planning and fiscal audit of all expenditures.

Four well-established Butler County non-profit agencies provide intake and case management for the Butler County Elderly Services Program: LifeSpan, Senior Citizens, Inc., Middletown Area Senior Citizens, Inc., and Oxford Senior Citizens, Inc. Other for profit and non-profit agencies perform a variety of in-home services needed by the older adults of Butler County.

BUTLER COUNTY ELDERLY SERVICES PROGRAM PARTICIPANT PROFILE

| RACE | | | HOUSEHOLD INCOME | | |
|------------------|--------------|------------|-----------------------|--------------|------------|
| | # | % | Poverty Level % | # | % |
| Caucasian | 2,681 | 89 | At or below 100% | 542 | 18 |
| African-American | 312 | 10 | 101% - 150% | 1,071 | 36 |
| Other | 16 | 1 | 151% - 200% | 754 | 25 |
| Total | 3,009 | 100 | 201% poverty or above | 642 | 21 |
| | | | Total | 3,009 | 100 |

| GENDER | | | AGE GROUPINGS | | |
|--------------|--------------|------------|---------------|--------------|------------|
| | # | % | | # | % |
| Male | 796 | 26 | Age 60-69 | 466 | 15 |
| Female | 2,213 | 74 | Age 70-79 | 1,022 | 34 |
| Total | 3,009 | 100 | Age 80-89 | 1,204 | 40 |
| | | | Age 90+ | 317 | 11 |
| | | | Total | 3,009 | 100 |

| PHYSICAL IMPAIRMENTS | | |
|-----------------------|--------------|------------|
| | # | % |
| Low Disabilities | 14 | 1 |
| Moderate Disabilities | 775 | 25 |
| Severe Disabilities | 2,220 | 74 |
| Total | 3,009 | 100 |

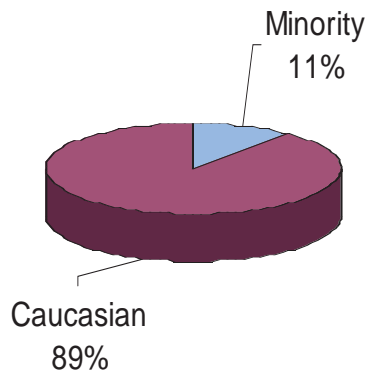
AVERAGE AGE
The average age of a Butler County ESPSM client in 2004 was 79 years old.

- INCOME AND EXPENSES**
- 18% of the clients have a co-payment
 - Average monthly income = \$1,419
 - Average monthly out-of-pocket medical costs = \$274

COST COMPARISONS

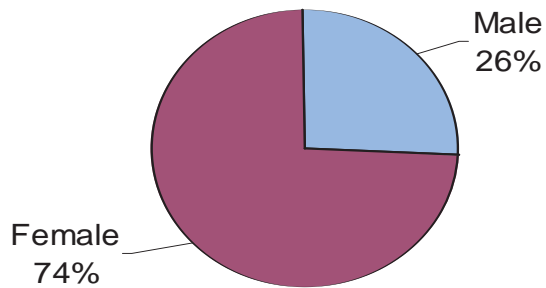
In 2004, ESP enabled 3,009 disabled Butler County residents to remain independent and live in their homes at an average monthly cost of \$318 compared to \$3,770 each month to live in a Medicaid nursing home.

RACIAL BREAKDOWN OF SENIORS RECEIVING SERVICES

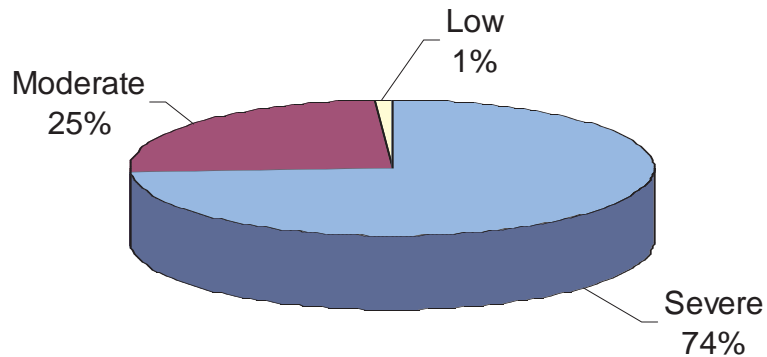


Minorities are 5.2% of the Butler County General Population (Census 2000) Eleven Percent (11%) of Butler County ESP Clients are Minorities.

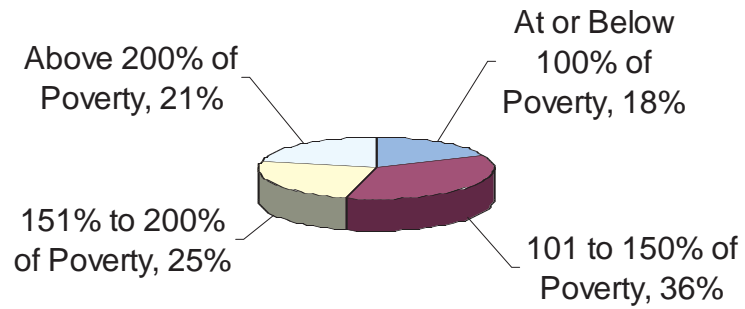
GENDER BREAKDOWN OF SENIORS RECEIVING SERVICES



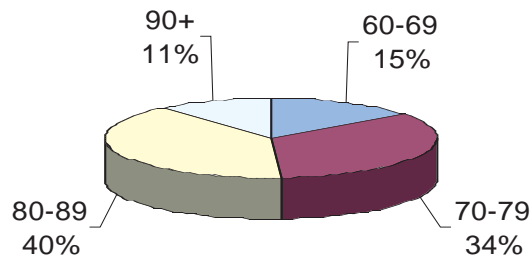
LEVEL OF DISABILITY BREAKDOWN OF SENIORS RECEIVING SERVICES



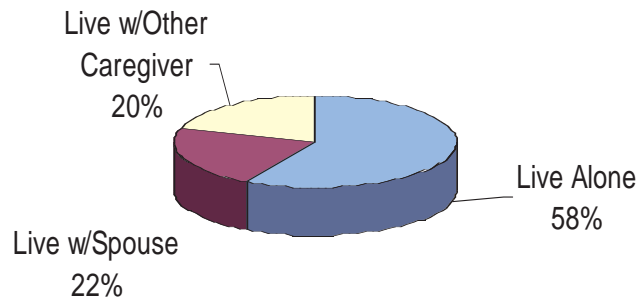
INCOME BREAKDOWN OF SENIORS RECEIVING SERVICES



AGE BREAKDOWN OF SENIORS RECEIVING SERVICES



LIVING ARRANGEMENTS OF SENIORS RECEIVING SERVICES



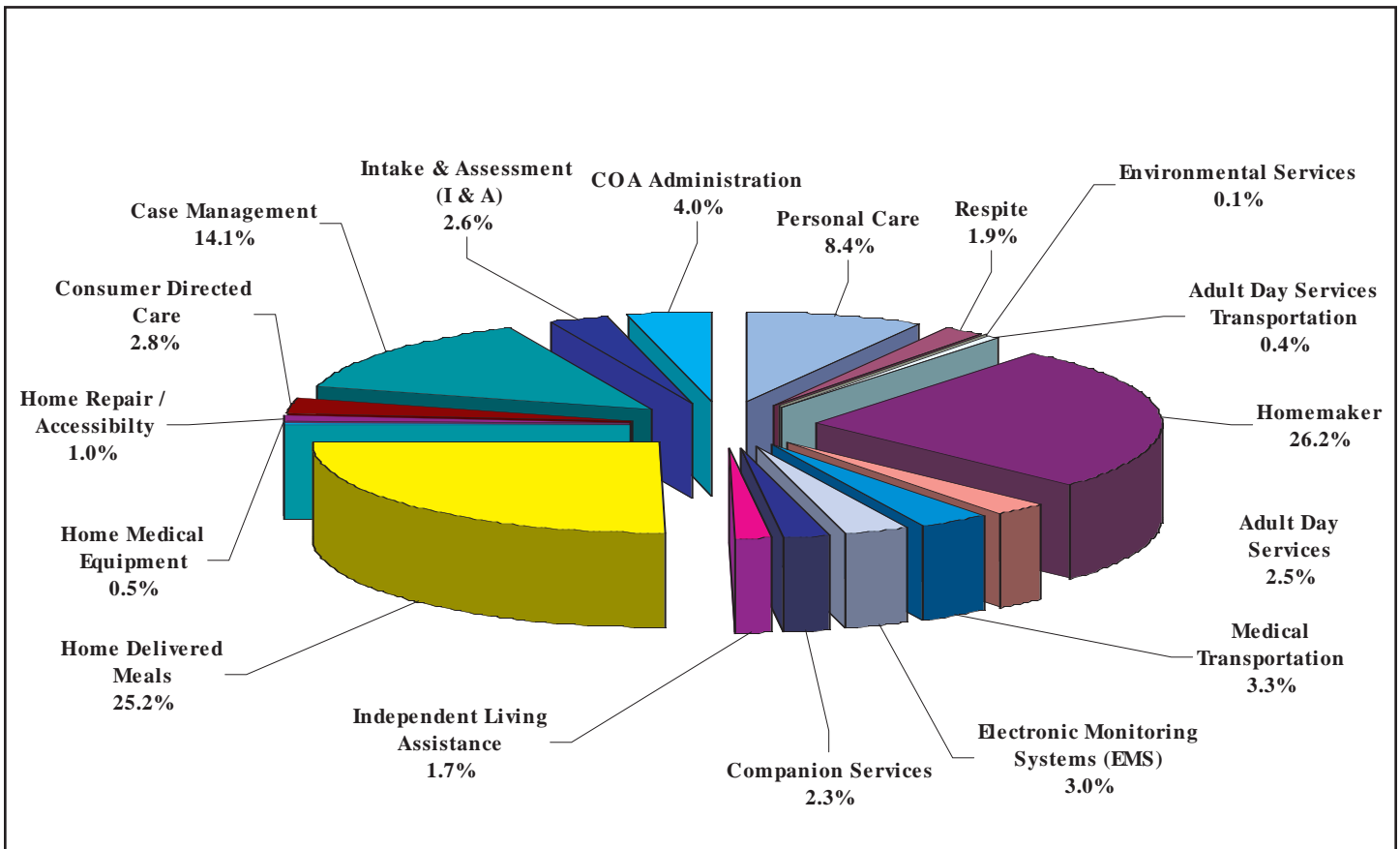
BUTLER COUNTY ELDERLY SERVICES PROGRAM

UTILIZATION OF FUNDS

Total Clients Served: 3,009

| | Clients | Service Units | Expenses |
|-------------------------------------|----------------|--------------------------|---------------------|
| Personal Care | 431 | 30,961 | \$ 758,237 |
| Homemaker | 1,284 | 101,868 | 2,371,002 |
| Respite | 72 | 7,412 | 173,587 |
| Adult Day Services | 70 | 4,905 | 228,933 |
| Adult Day Services Transportation | 33 | 18,586 | 39,591 |
| Medical Transportation | 547 | 16,358 | 297,746 |
| Electronic Monitoring Systems (EMS) | 1,267 | 12,091 | 270,035 |
| Companion Services | 188 | 10,322 | 212,635 |
| Independent Living Assistance | 310 | 6,181 | 150,145 |
| Home Delivered Meals | 1,840 | 383,930 | 2,279,532 |
| Home Medical Equipment | 360 | 695 | 44,910 |
| Environmental Services | 27 | 79 | 6,360 |
| Home Repair/Accessibility | 162 | 193 | 88,373 |
| Consumer Directed Care | 70 | N/A | 252,410 |
| Case Management | 3,009 | | 1,272,965 |
| Intake & Assessment (I & A) | | | 239,639 |
| COA SM Administration | | | 364,444 |
| Federal, State and Other | | | (569,880) |
| Client Donation | | | (99,154) |
| Client Co-Payment | | | (155,925) |
| | | Total Levy | \$ 8,225,585 |

BUTLER COUNTY ELDERLY SERVICES PROGRAM PERCENTAGE OF EXPENSE BREAKDOWN JANUARY 1 - DECEMBER 31, 2004



BUTLER COUNTY ELDERLY SERVICES PROGRAM PARTICIPANTS SERVED BY TOWNSHIP

| | | | |
|--------------------|-----|-----------------------|-----|
| Fairfield City | 253 | Morgan Township | 22 |
| Fairfield Township | 90 | Oxford City | 94 |
| Hamilton City | 996 | Oxford Township | 13 |
| Hanover Township | 40 | Reily Township | 11 |
| Lemon Township | 19 | Ross Township | 42 |
| Liberty Township | 66 | St. Clair Township | 49 |
| Madison Township | 39 | Trenton City | 86 |
| Middletown City | 889 | Wayne Township | 12 |
| Milford Township | 19 | West Chester Township | 192 |
| Monroe City | 58 | Other | 19 |

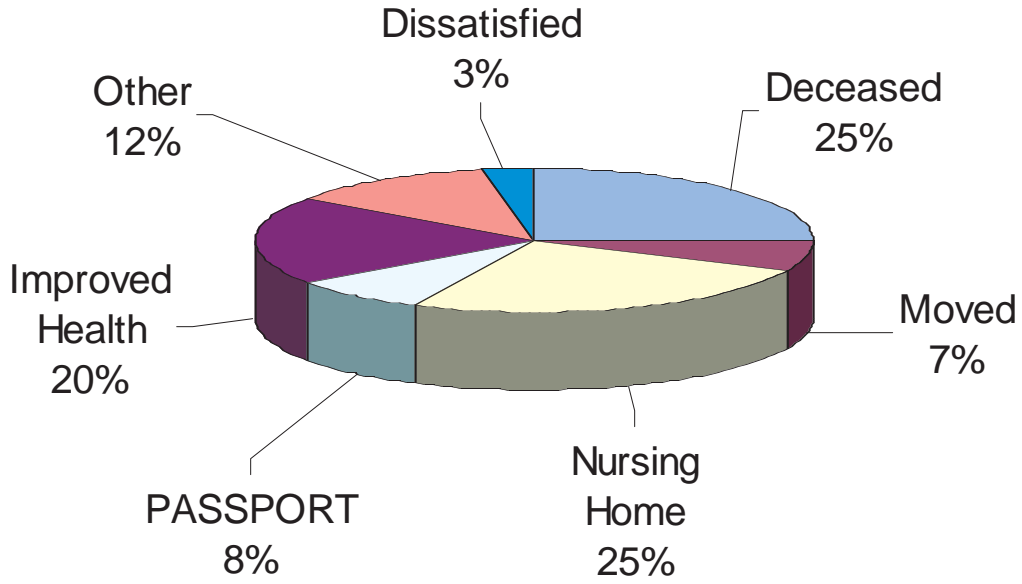
TOTAL PARTICIPANTS SERVED 3,009

Changing Profile of the ESPSM Client

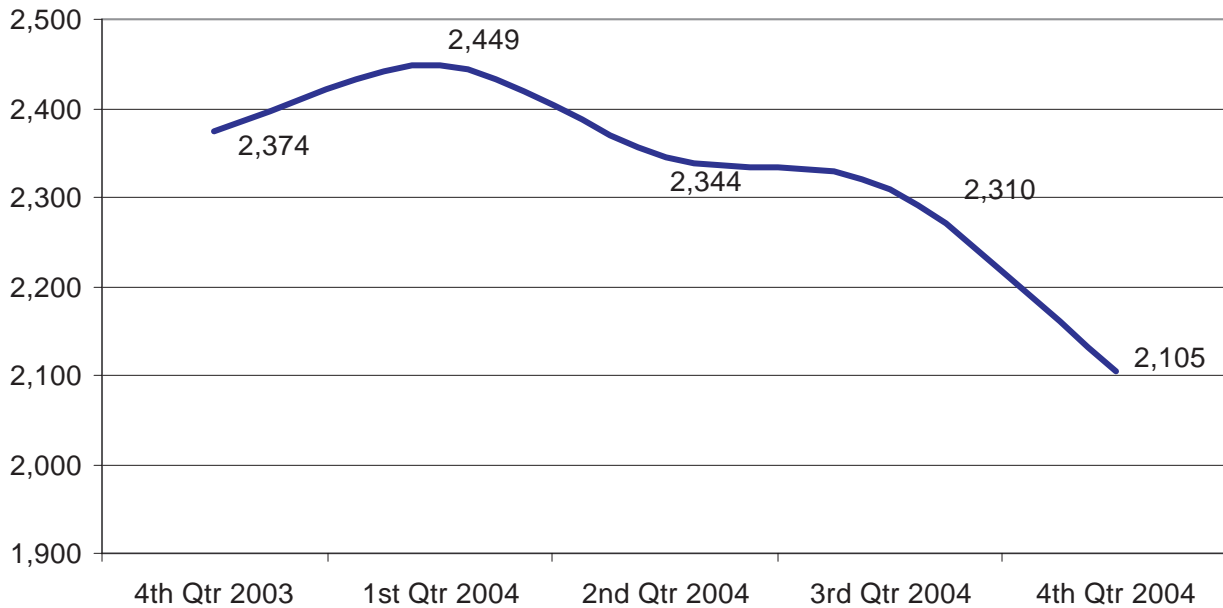
The client profile gives us a picture of an aging population, living longer, displaying increased disabilities and having a greater need for services. As health care costs continue to escalate, the Elderly Services ProgramSM must be prepared to meet the growing needs of our older adult population.

- Average out-of-pocket medical costs per ESP client for 2004 were \$274/month, an increase of 7% over the previous year.
- Over half (51%) of ESP clients were 80 years of age or older, an increase of 2% over the previous year.
- Over half (54%) of all ESP clients are at or below 150% of poverty, an increase of 6% over the previous year.
- Fifty-seven percent (57%) of ESP clients received personal care and/or homemaking services, 61% received home delivered meals and 42% received electronic monitoring systems.
- Fifty-eight percent (58%) of ESP clients live alone, an increase of 6% over the previous year.

BUTLER COUNTY ELDERLY SERVICES PROGRAM DISENROLLMENT OUTCOMES



B C E S P C e n s u s , 2 0 0 4



BUTLER COUNTY ELDERLY SERVICES PROGRAM

SERVICE PROVIDERS

| | | |
|---|---|--|
| Acare Home Health | First Medical | Nerswick Home Services, LLC |
| Adult Care Enterprises | Formula Exterminators, Inc. | Northwest Elder Care LLC |
| Adult Day Services @ Butler County Care Facility | Frosty's Chauffeur Service | Nurses Care, Inc. |
| Advanced Medical Equipment | Guardian Medical Monitoring, Inc. | Otterbein Lebanon Adult Day Service |
| Alan W. Arend | Handy Household Helpers | Oxford Senior Citizens, Inc. |
| Algo Termite & Pest Control | High Quality Staffing LLC | Personal Touch Home Care Of Ohio, Inc. |
| All Gone Termite & Pest Control | Home Care Network | Response Ability Systems, Inc. |
| Almost Family | Home Care Providers | Responselink of Cincinnati |
| Alternative Home Care & Staffing, Inc. | Home First Non-Medical | Rural Metro of NE Ohio |
| American Nursing Care, Inc. - Cincinnati | Home Helpers | S. P. Contracting, LLC |
| American Nursing Care, Inc. - Dayton | Home Instead Senior Care | Safeway Safety Step, Inc. |
| American Ramp Systems | Homeowner Solutions, LLC | Select Health Systems |
| Bathblest Renovations | House Mates | Senior Citizens, Inc. |
| Bernens Medical and Pharmacy | Interim Health Care of Cincinnati, Inc. | Senior Independence |
| Black Stone healthcare | Intrepid USA Healthcare Services | Senior Independence Adult Day Services |
| CareView Home Health | Jewish Family Service of the Cincinnati Area | Senior Resource Connection |
| Caring Hearts Home Health Care, Inc. | Judson Care Center, Inc. | Spotless Maintenance Systems |
| Catholic Social Services of Southwestern Ohio | Lifeline Systems, Inc. | The Visiting Nurse Association of Greater Cincinnati and Northern Kentucky |
| Colonial Community Services | LifeSpan Home Care | Thermal-Shield Inc. |
| Comfort Keepers #123 | LifeSphere | TriHealth Lifeline |
| Comfort Keepers #200 | LifeSphere Home Health Services | Tri-State Maintenance |
| Comfort Keepers #224 | McKnight Terrace Lifeline | U.T.S. (Universal Transportation Systems) |
| Comprehensive Home Health Care Services | Meda-Care Transportation, Inc. | V & N Services, Inc. |
| Deaconess Lifeline | Medic One | VRI |
| Edenvue | Mercy Lifeline | Wesley Community Services |
| Emerson Heating & Cooling Company | Mercy Lifeline Cincinnati | |
| Empowering Services II, Inc. | Middletown Area Senior Citizens, Inc. | |
| Envision Home Care Alternatives, Inc. | Milt's Termite & Pest Control | |
| | Mullaney's Pharmacy and Home Healthcare | |